





Tests [Edit Test](#) Tests  Groups  Links **Primary 5 Science (Term 4) - Rosyth**  Duplicate Print Delete **Assign Test****Test Introduction**[+ Add Introduction](#)**62 Questions** (65 Points)**Question Bank:** 9,275 Questions 

Test Questions

1 Test Assignment

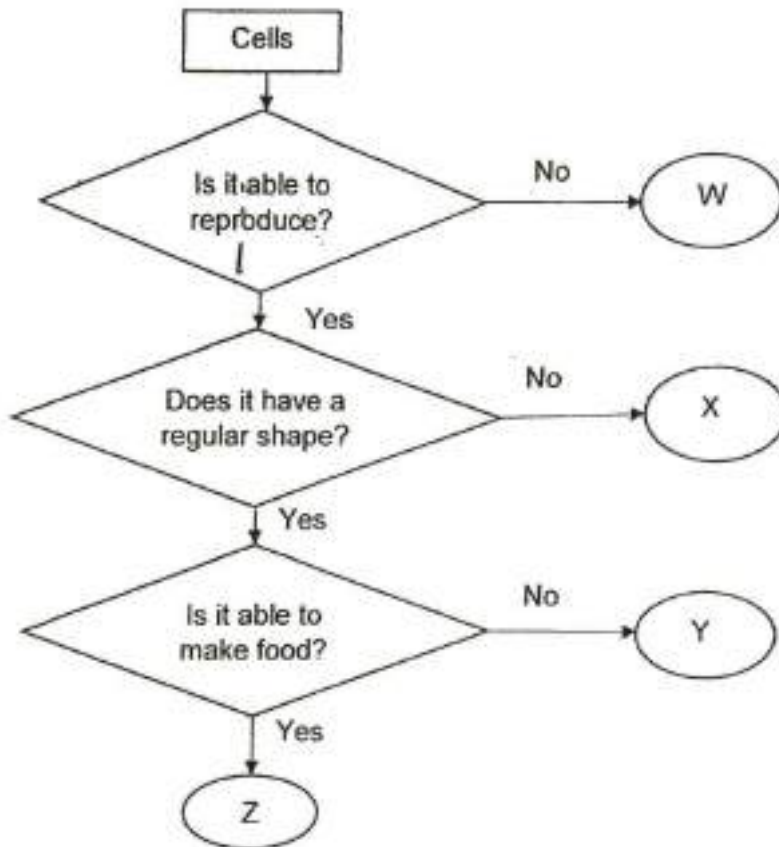
Question 1

Primary 5 Science » Primary 5 Science (Term 4)

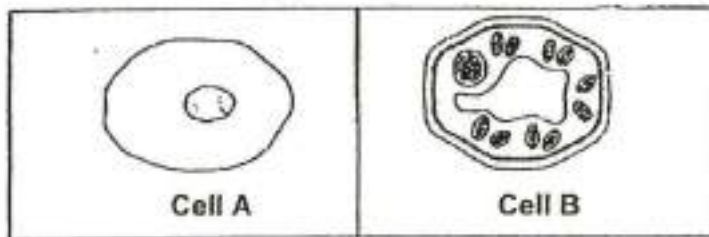
2 pts

For each question, four options are given. One of them is the correct answer. Make your choice (A, B, C or D) and choose the correct answer. (56 marks)

Study the flowchart below.



Which one of the following identifies Cells A and B correctly?



- A)

Cell A	Cell B
W	Z
- B)

Cell A	Cell B
X	Y
- C)

Cell A	Cell B
Y	Z
- ✓ D)

Cell A	Cell B
X	Z

Question Type: Multiple Choice
Randomize Answers: No
Date Added: Tue 27th Jul 2021
Last Modified: N/A

QID#: 28,532,363

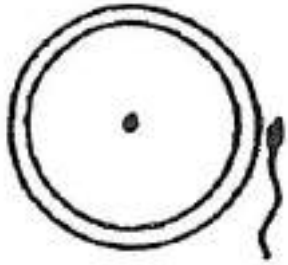
[Answers](#) | [Edit](#) | [Duplicate](#) | [Used In](#) | [Reorder](#)[Remove From Test](#)**Question 2**

Primary 5 Science » Primary 5 Science (Term 4)

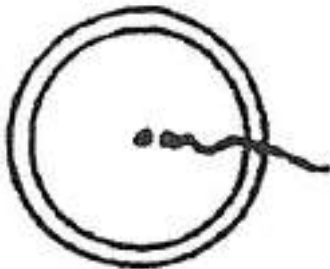
2 pts

Which one of the following diagram correctly shows that fertilisation of a human egg by a sperm is about to take place?

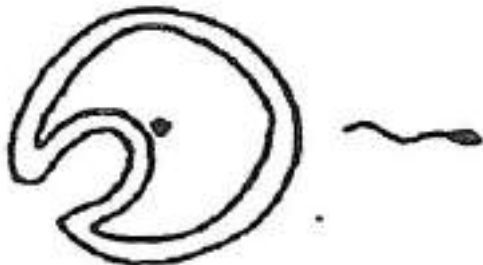
A)



✓ B)



C)



D)



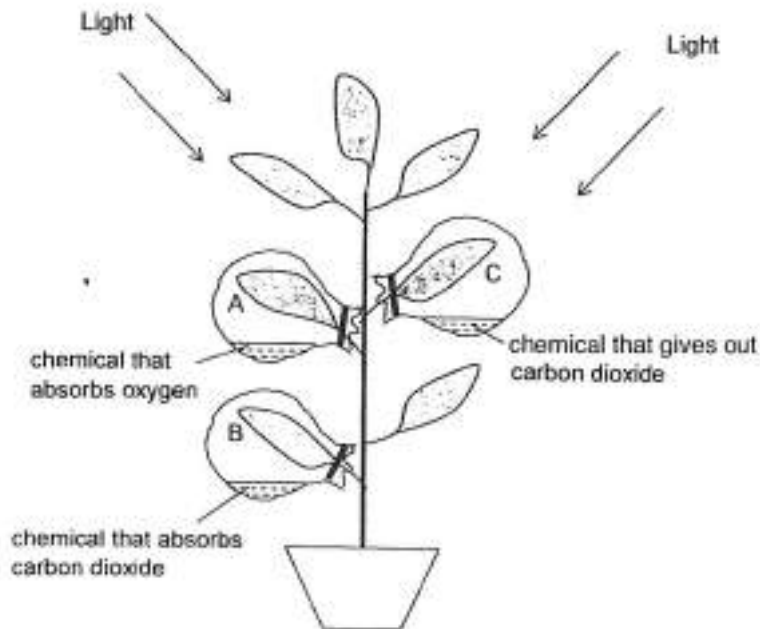
Question Type: Multiple Choice
Randomize Answers: No
Date Added: Tue 27th Jul 2021
Last Modified: N/A
QID#: 28,532,352

Question 3

Primary 5 Science » Primary 5 Science (Term 4)

2 pts

Ruby wanted to conduct an experiment on photosynthesis. Before she started her investigation, she left a plant in a dark cupboard for 48 hours. She then set up her experiment in the garden as shown below.



After four hours, Ruby removed leaves A, B and C, and conducted a starch test on the leaves. Iodine is a brown liquid that turns dark blue in the presence of starch.

Which one of the following sets of results would she most likely obtain?

- A)

Leaf A	Leaf B	Leaf C
It turned dark blue.	It turned dark blue.	It remained brown.
- ✓ B)

Leaf A	Leaf B	Leaf C
It turned dark blue.	It remained brown.	It turned dark blue.
- C)

Leaf A	Leaf B	Leaf C
It remained brown.	It turned dark blue.	It remained brown.
- D)

Leaf A	Leaf B	Leaf C
It remained brown.	It remained brown.	It turned dark blue.

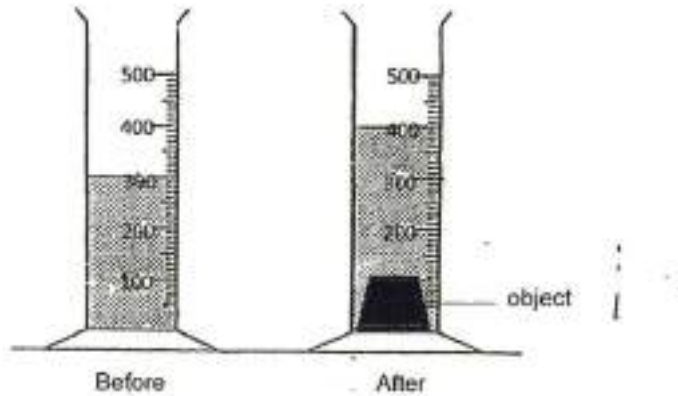
Question Type: Multiple Choice
Randomize Answers: No
Date Added: Tue 27th Jul 2021
Last Modified: N/A
QID#: 28,532,353

Question 4

Primary 5 Science » Primary 5 Science (Term 4)

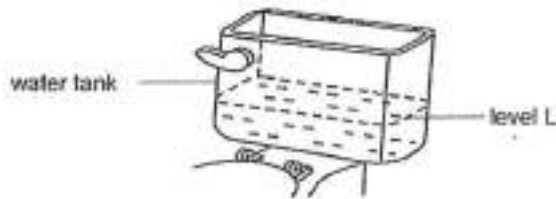
2 pts

Ali recorded the water level before and after four objects were placed in a measuring cylinder.



Object	Water level before object is placed (cm ³)	Water level after object is placed (cm ³)
W	300	310
X	300	320
Y	300	330
Z	300	315

Ali studied the water tank used for flushing a toilet bowl in his house as shown below. After flushing, water enters and re-fills the tank. The tank will stop filling when the water reaches level L.



Based on the results above, which object W, X, Y or Z should Ali put inside the water tank so that he would use the least water to flush the toilet?

- A) W
- B) X
- ✓ C) Y
- D) Z

Question Type: Multiple Choice
 Randomize Answers: No
 Date Added: Tue 27th Jul 2021
 Last Modified: N/A
 QID#: 28,532,354

[Answers](#) | [Edit](#) | [Duplicate](#) | [Used In](#) | [Reorder](#)

[Remove From Test](#)

Question 5

Primary 5 Science » Primary 5 Science (Term 4)

2 pts

The table below shows the melting points and boiling points of substances P, Q, R and S.

Substance	Melting Point (°C)	Boiling Point (°C)
P	48	189
Q	20	115
R	5	79
S	10	55

At which temperature will two of the above substances be in its liquid state?

- A) 45°C
- B) 70°C
- ✓ C) 110°C
- D) 130°C

Question Type: Multiple Choice
Randomize Answers: No
Date Added: Tue 27th Jul 2021
Last Modified: N/A
QID#: 28,532,355

[Answers](#) |
 [Edit](#) |
 [Duplicate](#) |
 [Used In](#) |
 [Reorder](#)

[Remove From Test](#)

Question 6

Primary 5 Science » Primary 5 Science (Term 4)

2 pts

Jane placed some freshly baked cookies from the oven into a covered glass jar as shown in the diagram below.



After 30 minutes, she removed the lid to take a cookie to eat but she noticed that the cookies on the top layer were damp.

Which one of the following correctly explains her observation?

- A) Water vapour in the jar condensed onto the warm cookies.
- B) The surrounding air in the jar condensed onto the warm cookies.
- C) The surrounding air in the jar gained heat and condensed onto the cool lid.
- ✓ D) Hot water vapour from the cookies lost heat and condensed onto the cool lid.

Question Type: Multiple Choice
Randomize Answers: No
Date Added: Tue 27th Jul 2021
Last Modified: N/A
QID#: 28,532,356

[Answers](#) |
 [Edit](#) |
 [Duplicate](#) |
 [Used In](#) |
 [Reorder](#)

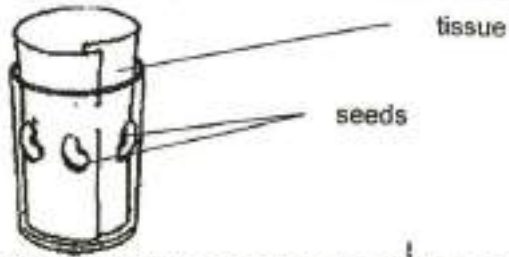
[Remove From Test](#)

Question 7

Primary 5 Science » Primary 5 Science (Term 4)

2 pts

Halim prepared three set-ups similar to the one shown below.



He prepared the three set-ups according to the table shown below.

Set-up	Presence of Water	Place
E	Yes	Refrigerator
F	Yes	Near Window
G	No	Refrigerator

Which one of the following is a possible aim of his experiment?

- A) To find out if seeds need air to germinate
- B) To find out if seeds need water to germinate
- ✓ C) To find out if seeds need warmth to germinate
- D) To find out if seeds need warmth and water to germinate

Question Type: Multiple Choice
Randomize Answers: No
Date Added: Tue 27th Jul 2021
Last Modified: N/A
QID#: 28,532,357

[Answers](#) |
 [Edit](#) |
 [Duplicate](#) |
 [Used In](#) |
 [Reorder](#)

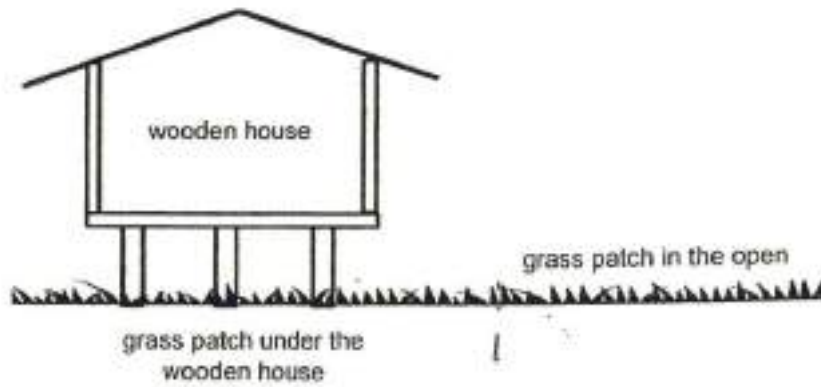
[Remove From Test](#)

Question 8

Primary 5 Science » Primary 5 Science (Term 4)

2 pts

A wooden house was built on a grass patch.



After two months, it was observed that the grass patch under the wooden house turned yellow while the grass patch in the open was still green.

Which of the following best explains the observation for the grass patch under the wooden house?

- A) There was not enough water.
- B) There was not enough oxygen.
- ✓ C) There was not enough sunlight.
- D) There was not enough chlorophyll.

Question Type: Multiple Choice
Randomize Answers: No
Date Added: Tue 27th Jul 2021
Last Modified: N/A
QID#: 28,532,358

[Answers](#) | [Edit](#) | [Duplicate](#) | [Used In](#) | [Reorder](#)

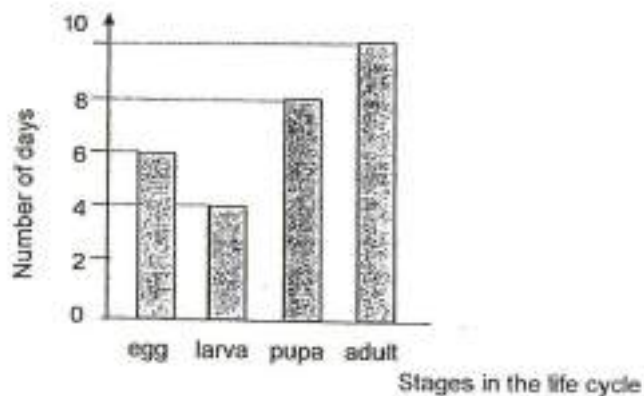
[Remove From Test](#)

Question 9

Primary 5 Science » Primary 5 Science (Term 4)

2 pts

The graph below shows the duration of each stage of the life cycle of an organism.



Based on the graph above, at what stage of development will the organism be on the 5th day after it has hatched?

- A) egg
- B) larva
- ✓ C) pupa
- D) adult

Question Type: Multiple Choice
Randomize Answers: No
Date Added: Tue 27th Jul 2021
Last Modified: N/A
QID#: 28,532,359

[↗ Answers](#) | [✎ Edit](#) | [📄 Duplicate](#) | [📌 Used In](#) | [⬇ Reorder](#)

[Remove From Test](#)

Question 10

Primary 5 Science » Primary 5 Science (Term 4)

2 pts

What are the properties of matter?

- A: It has mass.
- B: It occupies space.
- C: It cannot be compressed.

- A) A only
- ✓ B) A and B only
- C) A and C only
- D) A, B and C

Question Type: Multiple Choice
Randomize Answers: No
Date Added: Tue 27th Jul 2021
Last Modified: N/A
QID#: 28,532,360

[↗ Answers](#) | [✎ Edit](#) | [📄 Duplicate](#) | [📌 Used In](#) | [⬇ Reorder](#)

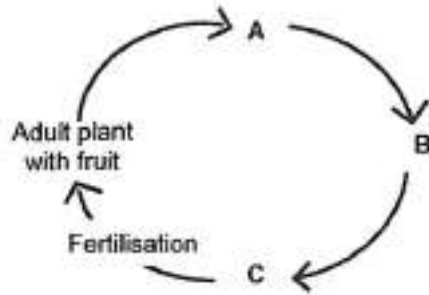
[Remove From Test](#)

Question 11

Primary 5 Science » Primary 5 Science (Term 4)

2 pts

The diagram below shows the developmental stages of a flowering plant and the point at which fertilisation occurs.



Which one of the following shows the correct stages?

A)

A	B	C
young plant	adult with flowers	seed

✓ B)

A	B	C
seed	young plant	adult with flowers

C)

A	B	C
adult with flowers	young plant	seed

D)

A	B	C
seed	adult with flowers	young plant

Question Type: Multiple Choice
Randomize Answers: No
Date Added: Tue 27th Jul 2021
Last Modified: N/A
QID#: 28,532,361

[Answers](#) | [Edit](#) | [Duplicate](#) | [Used In](#) | [Reorder](#)

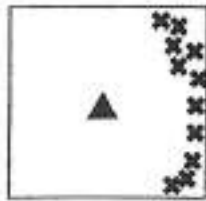
[Remove From Test](#)

Question 12

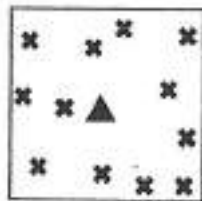
Primary 5 Science » Primary 5 Science (Term 4)

2 pts

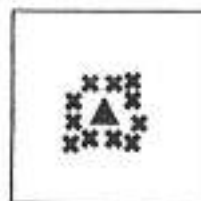
Three different types of plants, P, Q and R, dispersed their fruits and/or seeds on land as shown below. The seeds germinated and grew into young plants.



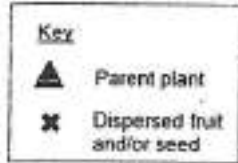
Plant P



Plant Q



Plant R



Which one of the following are likely characteristics of the fruits and /or seeds of the plants?

✓ A)

Plant P	Plant Q	Plant R
wing-like structure	stiff hairs	splits open when ripe

B)

Plant P	Plant Q	Plant R
splits open when ripe	brightly-coloured fruit	dries when ripe

C)

Plant P	Plant Q	Plant R
pod-like structure	stiff hairs	wing-like structure

D)

Plant P	Plant Q	Plant R
stiff hairs	fibrous husk	wing-like structure

Question Type: Multiple Choice
Randomize Answers: No
Date Added: Tue 27th Jul 2021
Last Modified: N/A
QID#: 28,532,362

[Answers](#) | [Edit](#) | [Duplicate](#) | [Used In](#) | [Reorder](#)

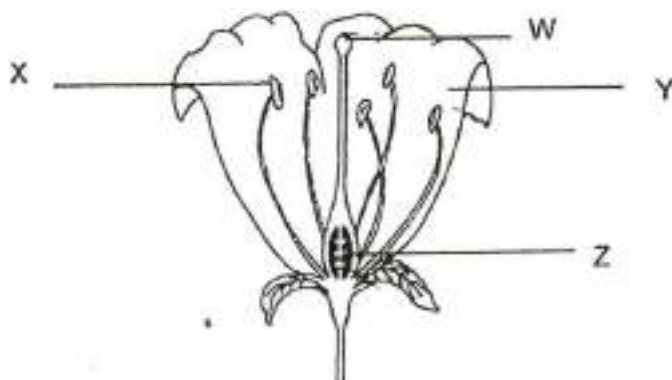
[Remove From Test](#)

Question 13

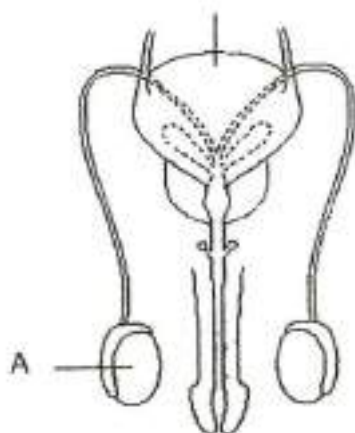
Primary 5 Science » Primary 5 Science (Term 4)

2 pts

The diagram below shows a plant and human reproductive system



Plant Reproductive System



Male Reproductive System

Which part X, Y, W or Z, has the same function as part A?

- ✓ A) X
- B) Y
- C) W
- D) Z

Question Type: Multiple Choice
Randomize Answers: No
Date Added: Tue 27th Jul 2021
Last Modified: N/A
QID#: 28,532,364

[Answers](#) | [Edit](#) | [Duplicate](#) | [Used In](#) | [Reorder](#)

[Remove From Test](#)

Question 14

Primary 5 Science » Primary 5 Science (Term 4)

2 pts

Study the three different cells below.



Which of the following statements is true for all the three cells?

- A) They can make food.
- B) They are animal cells.
- ✓ C) They have a nucleus and cell membrane.
- D) They contain cytoplasm and have cell wall.

Question Type: Multiple Choice
Randomize Answers: No
Date Added: Tue 27th Jul 2021
Last Modified: N/A
QID#: 28,532,365

[Answers](#) | [Edit](#) | [Duplicate](#) | [Used In](#) | [Reorder](#)

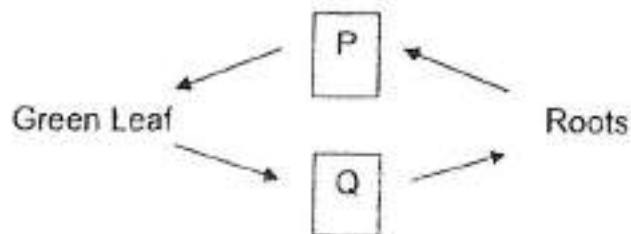
[Remove From Test](#)

Question 15

Primary 5 Science » Primary 5 Science (Term 4)

2 pts

Study the diagram below.



Which of the following correctly represents P and Q?

- A)

P	Q
water carrying tube	water carrying tube
- ✓ B)

P	Q
water carrying tube	food carrying tube
- C)

P	Q
food carrying tube	food carrying tube
- D)

P	Q
food carrying tube	water carrying tube

Question Type: Multiple Choice
Randomize Answers: No
Date Added: Tue 27th Jul 2021
Last Modified: N/A
QID#: 28,532,366

[Answers](#) | [Edit](#) | [Duplicate](#) | [Used In](#) | [Reorder](#)

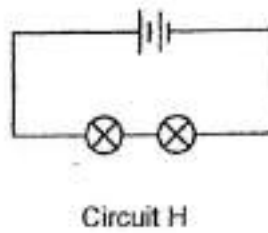
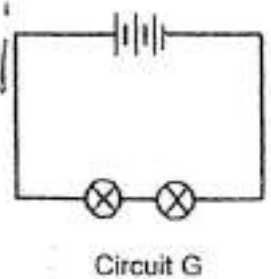
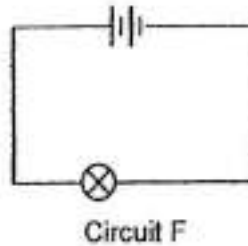
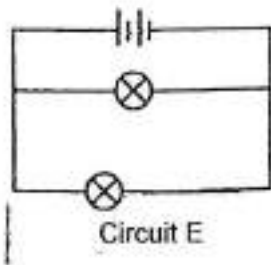
[Remove From Test](#)

Question 16

Primary 5 Science » Primary 5 Science (Term 4)

2 pts

Miguel set up four electrical circuits as shown below.



Which of the following set-ups correctly match the experimental aim?

- A)

Set-ups	Experimental aim
E and G	To find out how the number of bulbs affects the brightness of the bulbs
- ✓ B)

Set-ups	Experimental aim
E and H	To find out how the arrangement of bulbs affects the brightness of the bulbs
- C)

Set-ups	Experimental aim
F and G	To find out how the number of bulbs affects the brightness of the bulbs
- D)

Set-ups	Experimental aim
F and H	To find out how the arrangement of bulbs affects the brightness of the bulbs

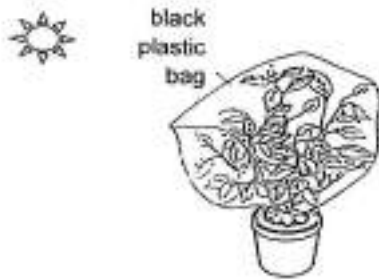
Question Type: Multiple Choice
Randomize Answers: No
Date Added: Tue 27th Jul 2021
Last Modified: N/A
QID#: 28,532,367

Question 17

Primary 5 Science » Primary 5 Science (Term 4)

2 pts

Susie put a well-watered plant into a black plastic bag. Then she tied the bag with a string and placed it under the Sun for several hours.



Which one of the following shows the changes in the amount of oxygen and carbon dioxide in the bag during that period of time?

A)

Amount of Oxygen	Amount of Carbon Dioxide
Increased	Increased

B)

Amount of Oxygen	Amount of Carbon Dioxide
Decreased	Decreased

C)

Amount of Oxygen	Amount of Carbon Dioxide
Increased	Decreased

✓ D)

Amount of Oxygen	Amount of Carbon Dioxide
Decreased	Increased

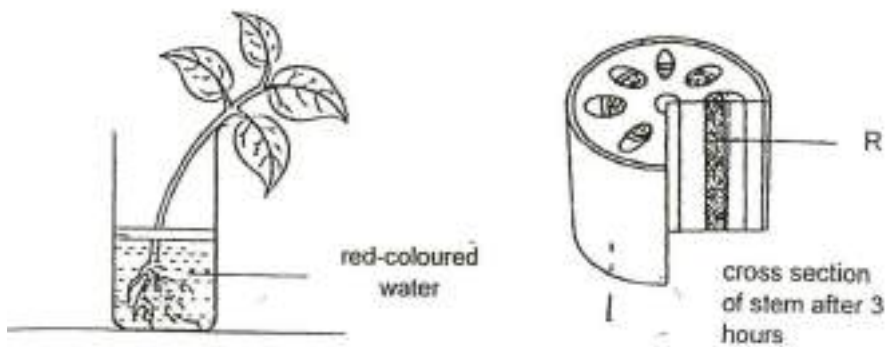
Question Type: Multiple Choice
Randomize Answers: No
Date Added: Tue 27th Jul 2021
Last Modified: N/A
QID#: 28,532,368

Question 18

Primary 5 Science » Primary 5 Science (Term 4)

2 pts

A plant was placed in a beaker of red-coloured water. After a few hours, a cross section of the stem was cut out and part R was observed to be stained red.



Which one of the following statements describes why part R was stained red?

- A) Water was carried from the leaves to the root.
- B) Sugar was carried from the leaves to the roots.
- C) Sugar was carried from the roots to the leaves.
- ✓ D) Water was carried from the roots to the leaves.

Question Type: Multiple Choice
 Randomize Answers: No
 Date Added: Tue 27th Jul 2021
 Last Modified: N/A
 QID#: 28,532,369

[Answers](#) | [Edit](#) | [Duplicate](#) | [Used In](#) | [Reorder](#)

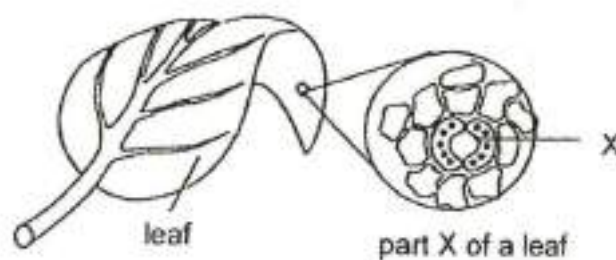
[Remove From Test](#)

Question 19

Primary 5 Science » Primary 5 Science (Term 4)

2 pts

The diagram below shows part X of a leaf.



Which one of the following statements is correct about X?

- A) Sunlight is trapped by part X.
- ✓ B) Gaseous exchange occurs at X.
- C) Only water vapour is lost through part X.
- D) Only carbon dioxide is taken in through part X.

Question Type: Multiple Choice
Randomize Answers: No
Date Added: Tue 27th Jul 2021
Last Modified: N/A
QID#: 28,532,370

[Answers](#) | [Edit](#) | [Duplicate](#) | [Used In](#) | [Reorder](#)

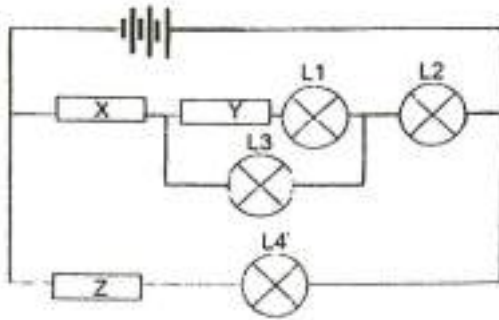
[Remove From Test](#)

Question 20

Primary 5 Science » Primary 5 Science (Term 4)

2 pts

Three rods, X, Y and Z, of unknown materials were placed in the circuit below.



The only light bulbs that lit up were L2, L3 and L4.

Which one of the following shows the most likely materials used for each rod?

- ✓ A)

X	Y	Z
Steel	Glass	Copper
- B)

X	Y	Z
Glass	Copper	Wood
- C)

X	Y	Z
Glass	Wood	Copper
- D)

X	Y	Z
Steel	Copper	Copper

Question Type: Multiple Choice
Randomize Answers: No
Date Added: Tue 27th Jul 2021
Last Modified: N/A
QID#: 28,532,371

[Answers](#) | [Edit](#) | [Duplicate](#) | [Used In](#) | [Reorder](#)

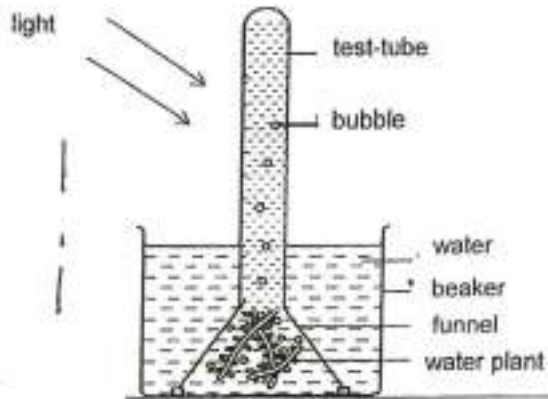
[Remove From Test](#)

Question 21

Primary 5 Science » Primary 5 Science (Term 4)

2 pts

Phyllis carried out an experiment to find out about the relationship between the colour of light and the rate of photosynthesis. The diagram below shows her set-up.



Which of the following must she record at the end of the experiment for her results?

- A) Intensity of light
- B) Volume of water in the beaker
- ✓ C) Amount of oxygen collected in the test tube
- D) Amount of carbon dioxide bubbles in the test tube

Question Type: Multiple Choice
Randomize Answers: No
Date Added: Tue 27th Jul 2021
Last Modified: N/A
QID#: 28,532,372

[Answers](#) | [Edit](#) | [Duplicate](#) | [Used In](#) | [Reorder](#)

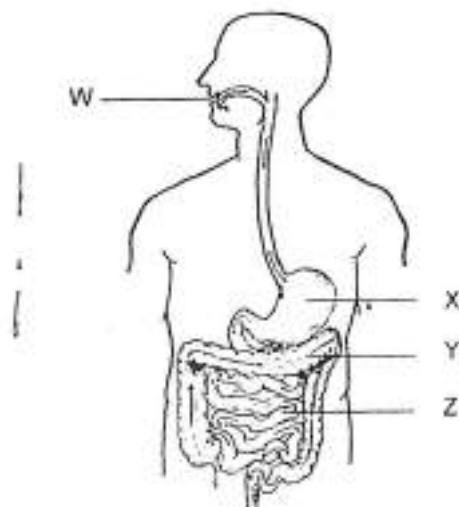
[Remove From Test](#)

Question 22

Primary 5 Science » Primary 5 Science (Term 4)

2 pts

The diagram below shows the parts of a human digestive system.



Which one of the following statements about the digestive system is correct?

- A) Digestion of food ends at X.

- ✓ B) Digestion of food begins at W.
- C) Digestive juices are produced at W, X and Y.
- D) Water is removed from undigested food at Z.

Question Type: Multiple Choice
Randomize Answers: No
Date Added: Tue 27th Jul 2021
Last Modified: N/A
QID#: 28,532,373

[Answers](#) | [Edit](#) | [Duplicate](#) | [Used In](#) | [Reorder](#)

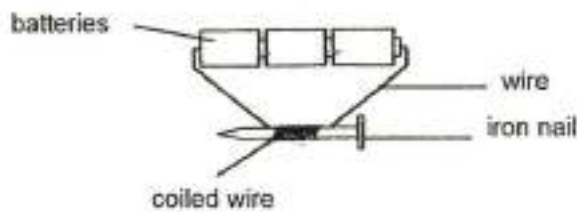
[Remove From Test](#)

Question 23

Primary 5 Science » Primary 5 Science (Term 4)

2 pts

The diagram below shows an electromagnet.



Which of the methods below will increase the strength of the electromagnet?

- A) Increase the length of wire used
- B) Change the iron nail to a plastic nail
- C) Change the direction of the batteries
- ✓ D) Increase the number of wire coils around the iron nail

Question Type: Multiple Choice
Randomize Answers: No
Date Added: Tue 27th Jul 2021
Last Modified: N/A
QID#: 28,532,374

[Answers](#) | [Edit](#) | [Duplicate](#) | [Used In](#) | [Reorder](#)

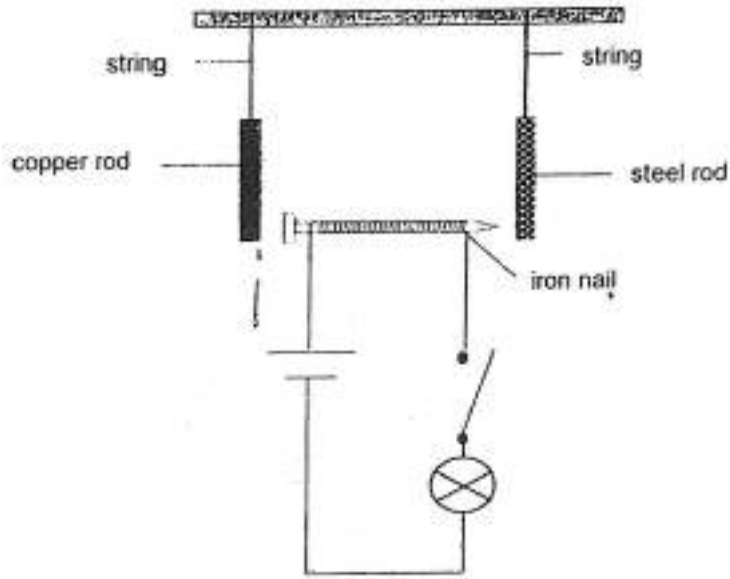
[Remove From Test](#)

Question 24

Primary 5 Science » Primary 5 Science (Term 4)

2 pts

An iron nail was placed near a copper rod and a steel rod as shown in the set-up below.



Which of the following is/are observed when he closes the switch?

- A: The bulb lights up.
- B: The steel rod moves towards the iron nail.
- C: The copper rod remains at the same position.
- D: Both the steel rod and copper rod will move towards the iron nail.

- A) A and D only
- B) B and C only
- C) C and D only
- ✓ D) A, B and C only

Question Type: Multiple Choice
 Randomize Answers: No
 Date Added: Tue 27th Jul 2021
 Last Modified: N/A
 QID#: 28,532,375

[Answers](#) | [Edit](#) | [Duplicate](#) | [Used In](#) | [Reorder](#)

[Remove From Test](#)

Question 25

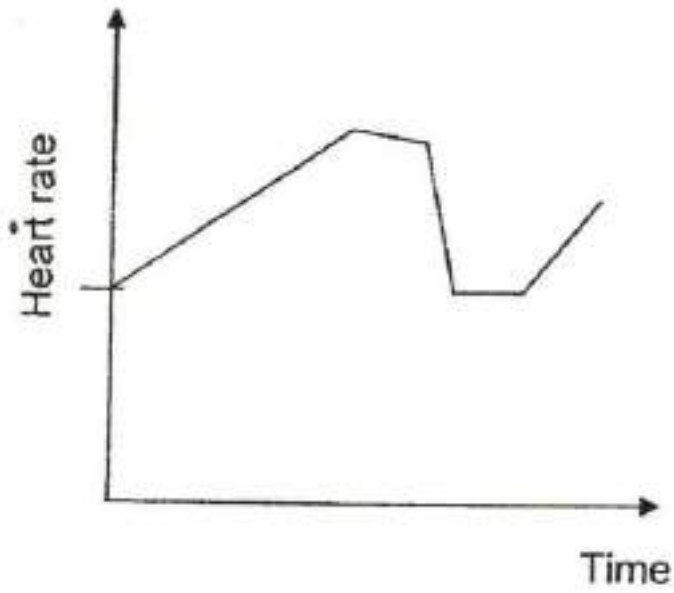
Primary 5 Science » Primary 5 Science (Term 4)

2 pts

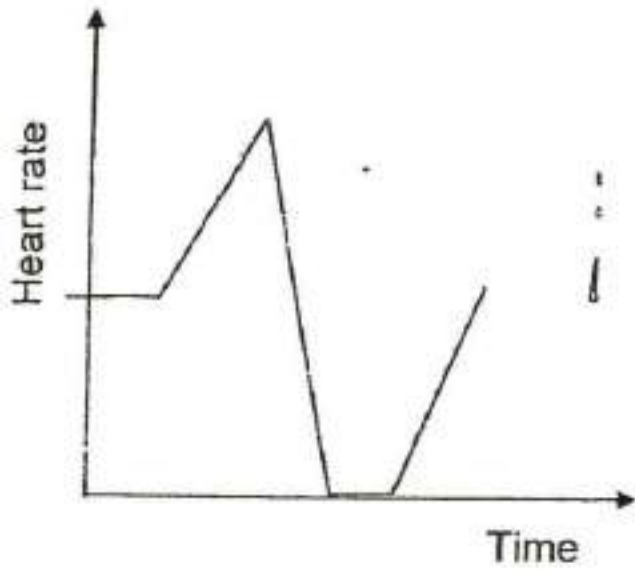
Joel went for his morning exercise. He ran to the entrance of a park. Then, he took a brisk walk in the park before resting on a bench. After that, he decided to run home.

Which one of the following graphs shows the changes in Joel's heart rate from the time he left his house to the time he reached home?

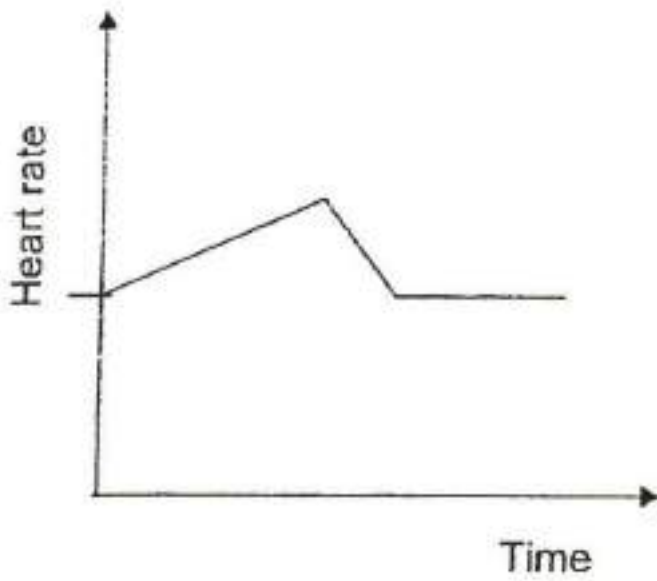
- ✓ A)



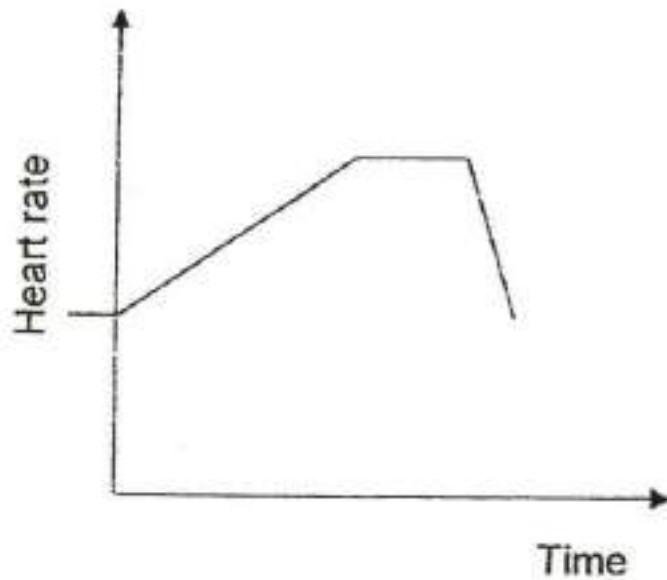
B)



C)



D)



Question Type: Multiple Choice
Randomize Answers: No
Date Added: Tue 27th Jul 2021
Last Modified: N/A
QID#: 28,532,376

[Answers](#) | [Edit](#) | [Duplicate](#) | [Used In](#) | [Reorder](#)

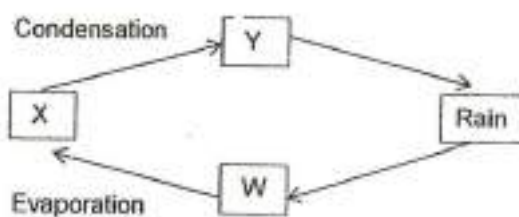
[Remove From Test](#)

Question 26

Primary 5 Science » Primary 5 Science (Term 4)

2 pts

The diagram below shows the water cycle. The arrows show the different stages of water in motion.



In which stage(s), X, Y or W, in the water cycle does water exist in the liquid state?

- A) W only
- ✓ B) W and Y only
- C) X and Y only
- D) W, X and Y

Question Type: Multiple Choice
Randomize Answers: No
Date Added: Tue 27th Jul 2021

Last Modified: N/A
QID#: 28,532,377

[Answers](#) | [Edit](#) | [Duplicate](#) | [Used In](#) | [Reorder](#)

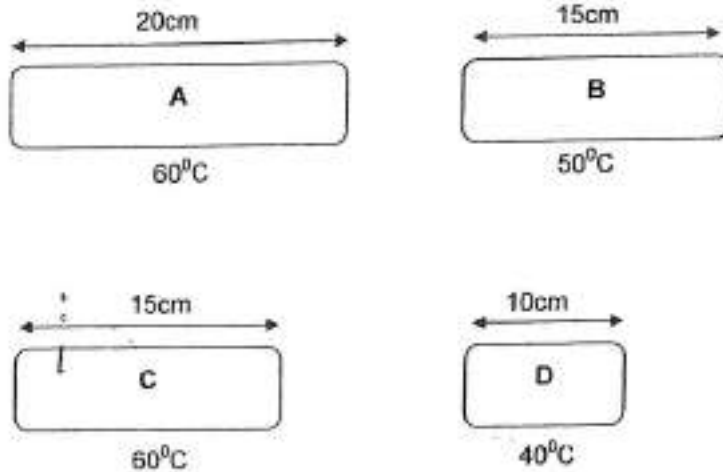
[Remove From Test](#)

Question 27

Primary 5 Science » Primary 5 Science (Term 4)

2 pts

Four steel rods of equal thickness but different lengths were heated to the temperatures indicated in the diagrams below.



All wanted to investigate if the amount of heat the object has is affected by the mass of the object and its temperature. Which one of the following should he compare?

- ✓ A) A, B and C only
- B) A, B and D only
- C) A, C and D only
- D) B, C and D only

Question Type: Multiple Choice
Randomize Answers: No
Date Added: Tue 27th Jul 2021
Last Modified: N/A
QID#: 28,532,378

[Answers](#) | [Edit](#) | [Duplicate](#) | [Used In](#) | [Reorder](#)

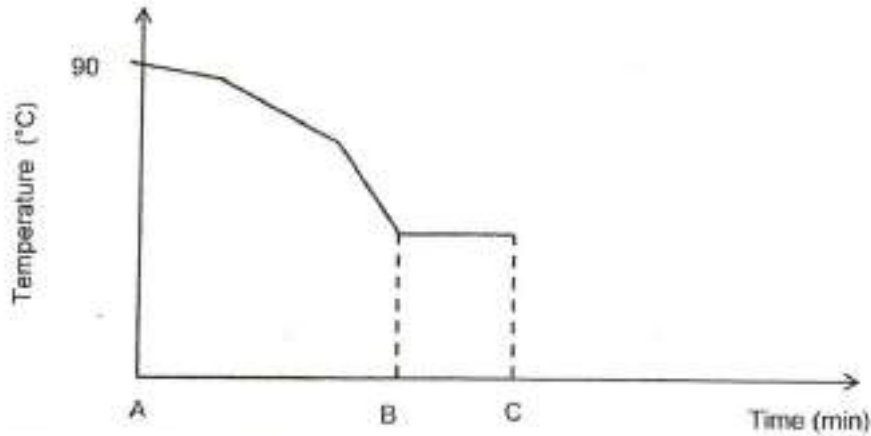
[Remove From Test](#)

Question 28

Primary 5 Science » Primary 5 Science (Term 4)

2 pts

The graph below shows the changes in the temperature of a bowl of water at 90°C which was left on the table over a period of time.



Which one of the following statements is correct?

- A) Water freezes from B to C.
- B) Water loses heat from B to C.
- ✓ C) Evaporation takes place from A to C.
- D) A change in state of water takes place only at B.

Question Type: Multiple Choice
 Randomize Answers: No
 Date Added: Tue 27th Jul 2021
 Last Modified: N/A
 QID#: 28,532,379

[Answers](#) | [Edit](#) | [Duplicate](#) | [Used In](#) | [Reorder](#)

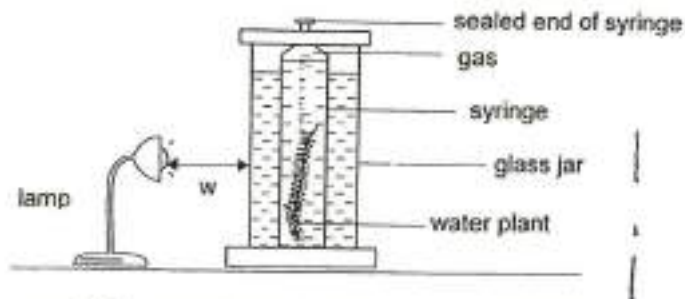
[Remove From Test](#)

Question 29

Primary 5 Science » Primary 5 Science (Term 4)

0 pts

Anna set up an experiment in a dark room as shown below. Light from the lamp was shone at the plant at a distance, w .



She repeated the experiment by placing the lamp at different distances from the glass jar. The results are shown in the table below.

W (cm)	Volume of gas collected after 1 hour (cm ³)
20	6
30	4
40	3

Based on his results, what was the relationship between the distance, and the volume of gas collected?
 (1 mark)

This question is designed for extended answers that parent/ teacher will have to assign and guide child to attempt after the test has been completed.

Grading: This question type is not graded on this system and will not affect the final score as it was designed in such a way that it requires manual assistance.

Question Type: Essay
Date Added: Tue 27th Jul 2021
Last Modified: N/A
QID#: 28,532,383

Correctly answered feedback

Concept: Relationship between variables

As the distance W increases, the volume of gas collected decreases.

Incorrectly answered feedback

Concept: Relationship between variables

As the distance W increases, the volume of gas collected decreases.

[Answers](#) | [Edit](#) | [Duplicate](#) | [Used In](#) | [Reorder](#)

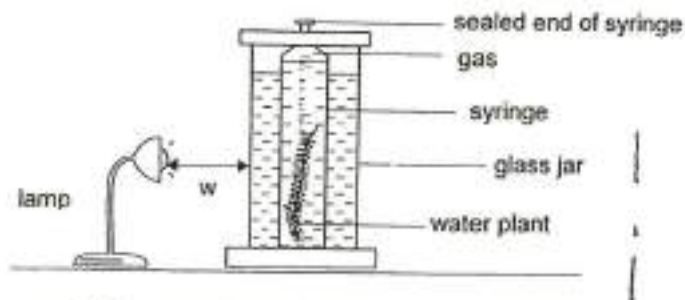
[Remove From Test](#)

Question 30

Primary 5 Science » Primary 5 Science (Term 4)

1 pt

Anna set up an experiment in a dark room as shown below. Light from the lamp was shone at the plant at a distance, w.



She repeated the experiment by placing the lamp at different distances from the glass jar. The results are shown in the table below.

W (cm)	Volume of gas collected after 1 hour (cm ³)
20	6
30	4
40	3

Name the gas that was collected in the syringe.

Accepted answers:

- ✓ Oxygen
- ✓ Oxygen gas

Question Type: Free Text
Date Added: Tue 27th Jul 2021
Last Modified: N/A
QID#: 28,532,414

[Answers](#) |
 [Edit](#) |
 [Duplicate](#) |
 [Used In](#) |
 [Reorder](#)

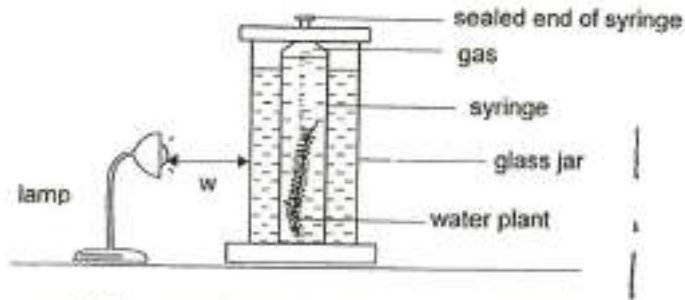
[Remove From Test](#)

Question 31

Primary 5 Science » Primary 5 Science (Term 4)

0 pts

Anna set up an experiment in a dark room as shown below. Light from the lamp was shone at the plant at a distance, w .



She repeated the experiment by placing the lamp at different distances from the glass jar. The results are shown in the table below.

W (cm)	Volume of gas collected after 1 hour (cm ³)
20	6
30	4
40	3

Explain how the gas was formed. (1 mark)

This question is designed for extended answers that parent/ teacher will have to assign and guide child to attempt after the test has been completed.

Grading: This question type is not graded on this system and will not affect the final score as it was designed in such a way that it requires manual assistance.

Question Type: Essay
Date Added: Tue 27th Jul 2021
Last Modified: N/A
QID#: 28,532,407

Correctly answered feedback

Concept on Photosynthesis: Explain the process photosynthesis

The chlorophyll in the plant traps light to combine carbon dioxide and water to produce oxygen.

OR

The plant carries out photosynthesis to produce oxygen.

Incorrectly answered feedback

Concept on Photosynthesis: Explain the process photosynthesis

The chlorophyll in the plant traps light to combine carbon dioxide and water to produce oxygen.

OR

The plant carries out photosynthesis to produce oxygen.

[Answers](#) |
 [Edit](#) |
 [Duplicate](#) |
 [Used In](#) |
 [Reorder](#)

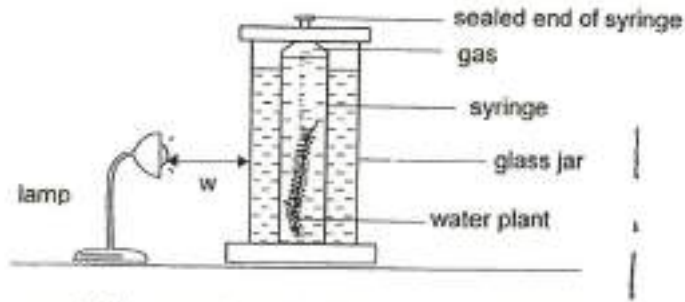
[Remove From Test](#)

Question 32

Primary 5 Science » Primary 5 Science (Term 4)

0 pts

Anna set up an experiment in a dark room as shown below. Light from the lamp was shone at the plant at a distance, w .



She repeated the experiment by placing the lamp at different distances from the glass jar. The results are shown in the table below.

W (cm)	Volume of gas collected after 1 hour (cm ³)
20	6
30	4
40	3

Why must the experiment be conducted in a dark room? (1 mark)

This question is designed for extended answers that parent/ teacher will have to assign and guide child to attempt after the test has been completed.

Grading: This question type is not graded on this system and will not affect the final score as it was designed in such a way that it requires manual assistance.

Question Type: Essay
 Date Added: Tue 27th Jul 2021
 Last Modified: N/A
 QID#: 28,532,385

Correctly answered feedback

Concept: ensuring the results of experiment not affected by external source
 To ensure that the rate of photosynthesis (VM) is not affected by the other sources of light .
 OR
 To ensure that the only source of light from the lamp affects the rate of photosynthesis of the plant and not any other sources such as light from sun or surrounding

Incorrectly answered feedback

Concept: ensuring the results of experiment not affected by external source
 To ensure that the rate of photosynthesis (VM) is not affected by the other sources of light .
 OR
 To ensure that the only source of light from the lamp affects the rate of photosynthesis of the plant and not any other sources such as light from sun or surrounding

[Answers](#) | [Edit](#) | [Duplicate](#) | [Used In](#) | [Reorder](#)

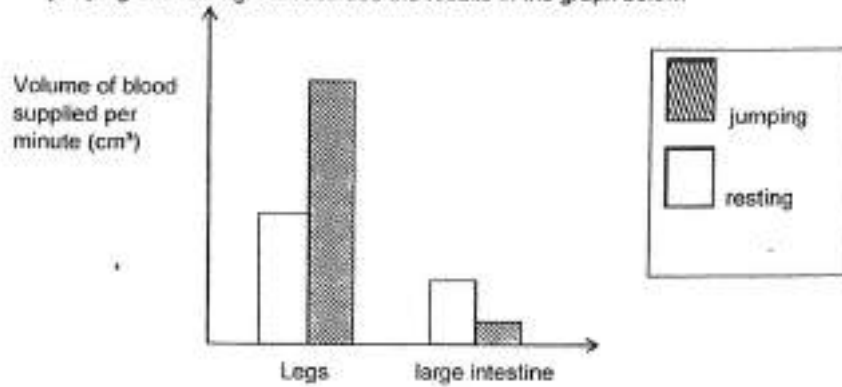
[Remove From Test](#)

Question 33

Primary 5 Science » Primary 5 Science (Term 4)

0 pts

Doctor Tan carried out an investigation to measure the volume of blood supplied per minute to different parts of the human body during two activities, jumping and resting. He recorded the results in the graph below.



Besides oxygen, name two other substances that are transported in the blood. (2 marks)

This question is designed for extended answers that parent/ teacher will have to assign and guide child to attempt after the test has been completed.

Grading: This question type is not graded on this system and will not affect the final score as it was designed in such a way that it requires manual assistance.

Question Type: Essay
Date Added: Tue 27th Jul 2021
Last Modified: N/A
QID#: 28,532,384

Correctly answered feedback

Concept: Identify the materials carried in the blood

Waste materials / Digested food / nutrients / minerals / mineral salts / water / carbon dioxide

NOT ACCEPTED: food / waste / oxygen

Incorrectly answered feedback

Concept: Identify the materials carried in the blood

Waste materials / Digested food / nutrients / minerals / mineral salts / water / carbon dioxide

NOT ACCEPTED: food / waste / oxygen

[Answers](#) | [Edit](#) | [Duplicate](#) | [Used In](#) | [Reorder](#)

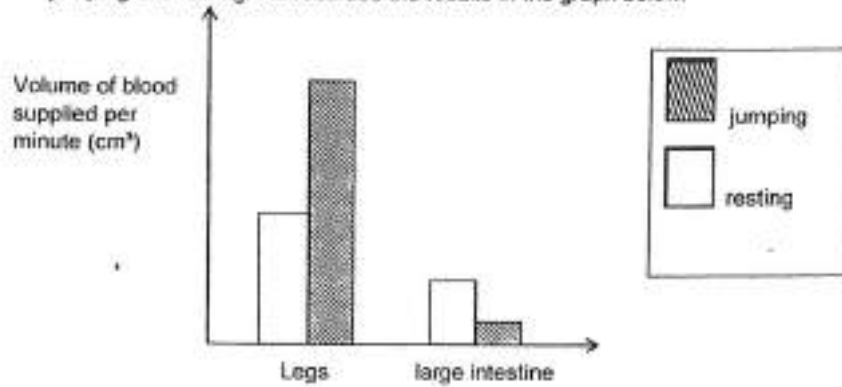
[Remove From Test](#)

Question 34

Primary 5 Science » Primary 5 Science (Term 4)

0 pts

Doctor Tan carried out an investigation to measure the volume of blood supplied per minute to different parts of the human body during two activities, jumping and resting. He recorded the results in the graph below.



Based on the graph, would the amount of water absorbed by the large intestine decrease, increase or remain the same during the jumping activity? Explain why. (1 mark)

This question is designed for extended answers that parent/ teacher will have to assign and guide child to attempt after the test has been completed.

Grading: This question type is not graded on this system and will not affect the final score as it was designed in such a way that it requires manual assistance.

Question Type: Essay
Date Added: Tue 27th Jul 2021
Last Modified: N/A
QID#: 28,532,390

Correctly answered feedback

Concept: More blood is transported during rigorous activities to the parts of the body

Decrease. Less blood is pumped to the large intestines.

OR

Decrease. Pumping blood to large intestine will be slower.

[Answers](#) | [Edit](#) | [Duplicate](#) | [Used In](#) | [Reorder](#)

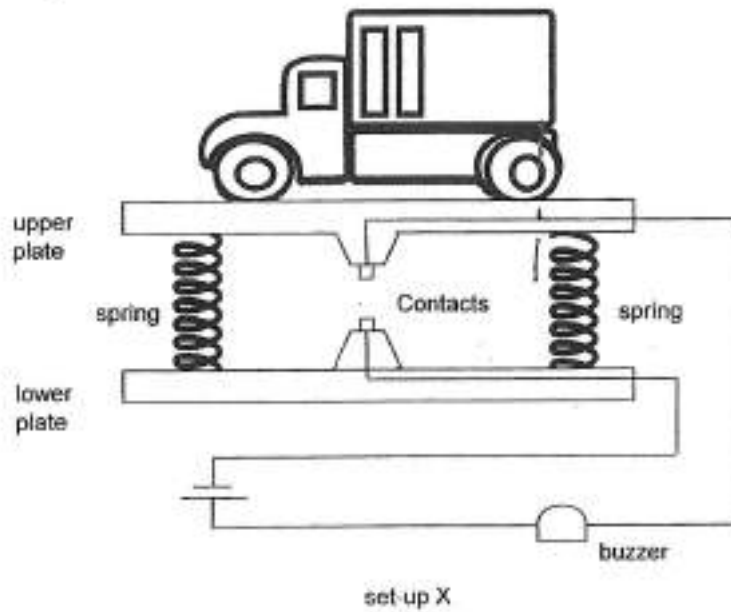
[Remove From Test](#)

Question 35

Primary 5 Science » Primary 5 Science (Term 4)

1 pt

All trucks must not be more that 4000kg in mass in order to travel on a bridge. A device, set-up X, is used to check the mass of the truck before it is allowed to cross the bridge. If the truck is more that 4000kg, the springs will be pressed down and the buzzer will sound.



What type of material are the contacts made of?

Accepted answers:

- ✓ Metal
- ✓ Good conductor of electricity

Question Type: Free Text
Date Added: Tue 27th Jul 2021
Last Modified: N/A
QID#: 28,532,415

[Answers](#) | [Edit](#) | [Duplicate](#) | [Used In](#) | [Reorder](#)

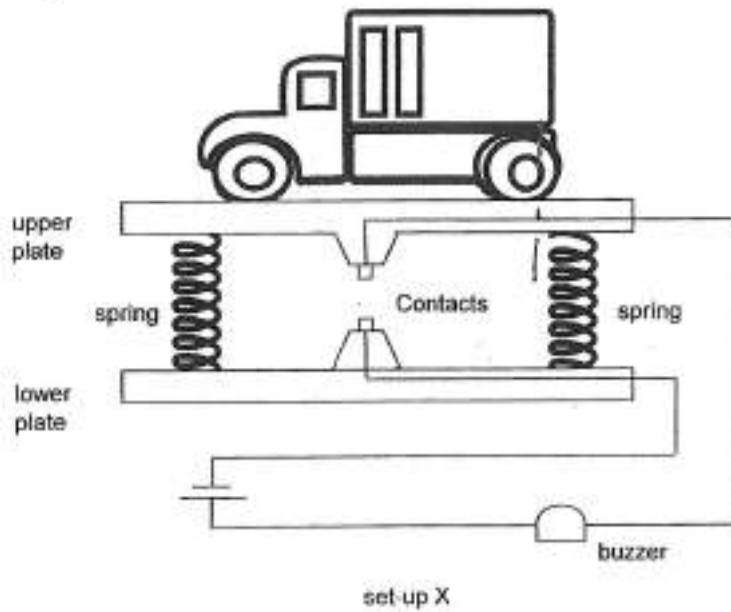
[Remove From Test](#)

Question 36

Primary 5 Science » Primary 5 Science (Term 4)

0 pts

All trucks must not be more than 4000kg in mass in order to travel on a bridge. A device, set-up X, is used to check the mass of the truck before it is allowed to cross the bridge. If the truck is more than 4000kg, the springs will be pressed down and the buzzer will sound.



Explain how the buzzer will sound. (1 mark)

This question is designed for extended answers that parent/ teacher will have to assign and guide child to attempt after the test has been completed.

Grading: This question type is not graded on this system and will not affect the final score as it was designed in such a way that it requires manual assistance.

Question Type: Essay
 Date Added: Tue 27th Jul 2021
 Last Modified: N/A
 QID#: 28,532,386

Correctly answered feedback

Concept: Understand that current can only flow through a closed circuit
 When the truck is more than 4000kg, it will press the upper plate down and the close the contact to create a close circuit to allow electricity to flow through and the buzzer will sound

Incorrectly answered feedback

Concept: Understand that current can only flow through a closed circuit
 When the truck is more than 4000kg, it will press the upper plate down and the close the contact to create a close circuit to allow electricity to flow through and the buzzer will sound

[Answers](#) | [Edit](#) | [Duplicate](#) | [Used In](#) | [Reorder](#)

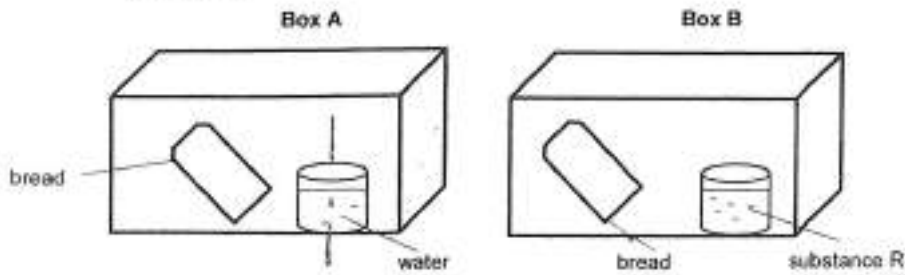
[Remove From Test](#)

Question 37

Primary 5 Science » Primary 5 Science (Term 4)

0 pts

Jane placed 2 identical slices of bread into two identical airtight boxes, A and B. She placed the boxes in a warm place. Substance R absorbs water vapour from the air.



In which box, A or B, would fungus first appear on the bread? Give a reason for your answer. (1 mark)

This question is designed for extended answers that parent/ teacher will have to assign and guide child to attempt after the test has been completed.

Grading: This question type is not graded on this system and will not affect the final score as it was designed in such a way that it requires manual assistance.

Question Type: Essay
Date Added: Tue 27th Jul 2021
Last Modified: N/A
QID#: 28,532,387

Correctly answered feedback

Key concept: Factors necessary for faster growth of fungi

Box A. It has more water for fungus to survive and grow / germinate (faster).

Incorrectly answered feedback

Key concept: Factors necessary for faster growth of fungi

Box A. It has more water for fungus to survive and grow / germinate (faster).

[Answers](#) | [Edit](#) | [Duplicate](#) | [Used In](#) | [Reorder](#)

[Remove From Test](#)

Question 38

Primary 5 Science » Primary 5 Science (Term 4)

0 pts

Jane bought a pair of leather shoes. When she opened the box, she found a packet of drying agent as shown in the diagram below.



Why was the drying agent included in the box?

[2]

This question is designed for extended answers that parent/ teacher will have to assign and guide child to attempt after the test has been completed.

Grading: This question type is not graded on this system and will not affect the final score as it was designed in such a way that it requires manual assistance.

Question Type: Essay
Date Added: Tue 27th Jul 2021

Last Modified: N/A
QID#: 28,532,388

Correctly answered feedback

Key Concept: Removal of some conditions to prevent growth of fungi

The drying agent absorbs / remove water and prevents fungus from growing on the leather shoes.

Incorrectly answered feedback

Key Concept: Removal of some conditions to prevent growth of fungi

The drying agent absorbs / remove water and prevents fungus from growing on the leather shoes.

[Answers](#) | [Edit](#) | [Duplicate](#) | [Used In](#) | [Reorder](#)

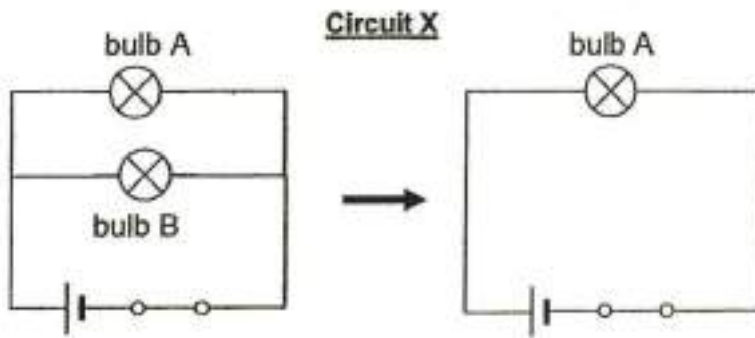
[Remove From Test](#)

Question 39

Primary 5 Science » Primary 5 Science (Term 4)

0 pts

The diagram below shows electric circuit X.



Will bulb A remain lit when bulb B is removed as shown above? Give a reason. (1 mark)

This question is designed for extended answers that parent/ teacher will have to assign and guide child to attempt after the test has been completed.

Grading: This question type is not graded on this system and will not affect the final score as it was designed in such a way that it requires manual assistance.

Question Type: Essay
Date Added: Tue 27th Jul 2021
Last Modified: N/A
QID#: 28,532,389

Correctly answered feedback

Concept: Understand that current can only flow through a closed circuit
Yes, the circuit is closed so current can flow through the circuit lighting up the bulb.
OR
Yes. The bulbs are in parallel arrangement so there is another pathway for the electricity to flow through
(do not say parallel circuit)

Incorrectly answered feedback

Concept: Understand that current can only flow through a closed circuit
 Yes, the circuit is closed so current can flow through the circuit lighting up the bulb.
 OR
 Yes. The bulbs are in parallel arrangement so there is another pathway for the electricity to flow through
 (do not say parallel circuit)

[Answers](#) |
 [Edit](#) |
 [Duplicate](#) |
 [Used In](#) |
 [Reorder](#)

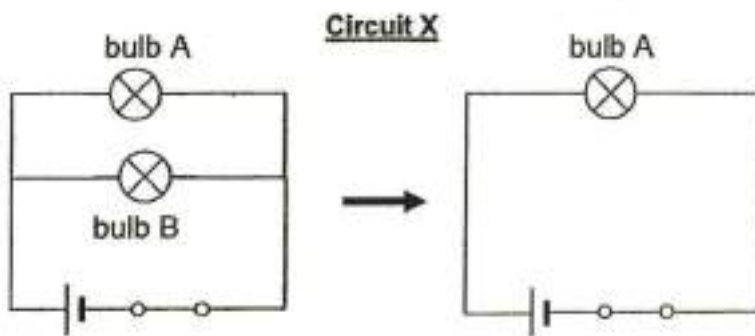
[Remove From Test](#)

Question 40

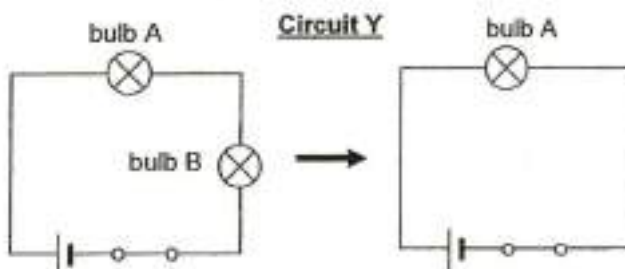
Primary 5 Science » Primary 5 Science (Term 4)

0 pts

The diagram below shows electric circuit X.



The electric circuit is rearranged to form circuit Y as shown below.



What is the difference you observe in bulb A when bulb B is removed?
 Explain why. [2]

This question is designed for extended answers that parent/ teacher will have to assign and guide child to attempt after the test has been completed.

Grading: This question type is not graded on this system and will not affect the final score as it was designed in such a way that it requires manual assistance.

Question Type: Essay
Date Added: Tue 27th Jul 2021
Last Modified: N/A
QID#: 28,532,391

Correctly answered feedback

Concept: Understand that an open circuit will not allow electricity to pass through

Bulb A is brighter . There will be more current flowing through bulb A.

ACCEPTED BUT NOT A GOOD ANSWER:

Bulb A does not need to share the electricity with any other bulb and will become brighter.

Incorrectly answered feedback

Concept: Understand that an open circuit will not allow electricity to pass through

Bulb A is brighter . There will be more current flowing through bulb A.

ACCEPTED BUT NOT A GOOD ANSWER:

Bulb A does not need to share the electricity with any other bulb and will become brighter.

[Answers](#) | [Edit](#) | [Duplicate](#) | [Used In](#) | [Reorder](#)

[Remove From Test](#)

Question 41

Primary 5 Science » Primary 5 Science (Term 4)

0 pts

State a similarity and a difference between evaporation and boiling. [2]

Similarity: _____

Difference: _____

This question is designed for extended answers that parent/ teacher will have to assign and guide child to attempt after the test has been completed.

Grading: This question type is not graded on this system and will not affect the final score as it was designed in such a way that it requires manual assistance.

Question Type: Essay
Date Added: Tue 27th Jul 2021
Last Modified: N/A
QID#: 28,532,392

Correctly answered feedback

Key Concept: defining and distinguishing between evaporation and boiling processes

Similarity:

both are heat gain processes

or

Both involve the change in state from liquid to gaseous state.

Difference:

Evaporation occurs at any temperature (between melting point and boiling point/ between 0 °C and 100 °C for water) but boiling occurs at a fixed temperature (at boiling point / 100°C for water)

or

Evaporation occurs at the surface of liquid (water) but boiling occurs throughout the liquid (water)

Incorrectly answered feedback

Key Concept: defining and distinguishing between evaporation and boiling processes

Similarity:

both are heat gain processes

or

Both involve the change in state from liquid to gaseous state.

Difference:

Evaporation occurs at any temperature (between melting point and boiling point/ between 0 °C and 100 °C for water) but boiling occurs at a fixed temperature (at boiling point / 100°C for water)

or

Evaporation occurs at the surface of liquid (water) but boiling occurs throughout the liquid (water)

[Answers](#) | [Edit](#) | [Duplicate](#) | [Used In](#) | [Reorder](#)

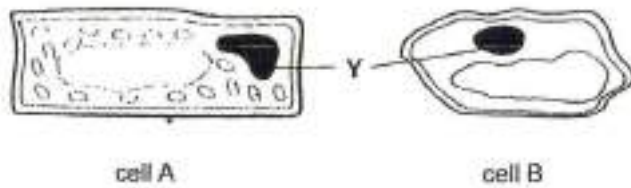
[Remove From Test](#)

Question 42

Primary 5 Science » Primary 5 Science (Term 4)

1 pt

The diagram below shows two different types of cells, A and B, from the same plant.



cell A

cell B

In which part of the plant are you likely to find cell A?

Accepted answers:

- ✓ leaf
- ✓ Green stem
- ✓ Guard cells

Question Type: Free Text
Date Added: Tue 27th Jul 2021
Last Modified: N/A
QID#: 28,532,411

Correctly answered feedback

Key Concept: relate type of cell to part of plant

leaf/green stem/Any green parts of the plant including guard cells

Incorrectly answered feedback

Key Concept: relate type of cell to part of plant

leaf/green stem/Any green parts of the plant including guard cells

[Answers](#) | [Edit](#) | [Duplicate](#) | [Used In](#) | [Reorder](#)

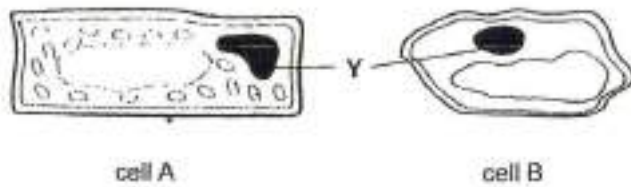
[Remove From Test](#)

Question 43

Primary 5 Science » Primary 5 Science (Term 4)

0 pts

The diagram below shows two different types of cells, A and B, from the same plant.



What is the function of Part Y? (1 mark)

This question is designed for extended answers that parent/ teacher will have to assign and guide child to attempt after the test has been completed.

Grading: This question type is not graded on this system and will not affect the final score as it was designed in such a way that it requires manual assistance.

Question Type: Essay
Date Added: Tue 27th Jul 2021
Last Modified: N/A
QID#: 28,532,393

Correctly answered feedback

Key Concept: Recognise part and state function

Y controls all activities in the cell
 NOT ACCEPTED: stores (genetic) information

Incorrectly answered feedback

Key Concept: Recognise part and state function

Y controls all activities in the cell
 NOT ACCEPTED: stores (genetic) information

[Answers](#) | [Edit](#) | [Duplicate](#) | [Used In](#) | [Reorder](#)

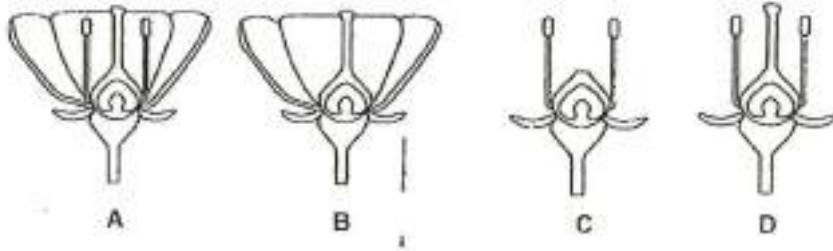
[Remove From Test](#)

Question 44

Primary 5 Science » Primary 5 Science (Term 4)

0 pts

The diagram below shows four large and brightly-coloured flowers A, B, C and D from the same type of plant. Some parts of the flower have been removed.



Explain your answer in the previous question. (2 marks)

This question is designed for extended answers that parent/ teacher will have to assign and guide child to attempt after the test has been completed.

Grading: This question type is not graded on this system and will not affect the final score as it was designed in such a way that it requires manual assistance.

Question Type: Essay
 Date Added: Tue 27th Jul 2021
 Last Modified: N/A
 QID#: 28,532,394

Correctly answered feedback

Key concept: how fertilisation takes place

The **stigma** from C has been **removed** and **pollination cannot take place**, thus **no fertilisation will take place**.

OR

The **stigma** has been removed and **both pollination and fertilisation cannot take place**.

OR

The **stigma** is needed to **receive the pollen grains** so that the pollen grains **can fuse with the ovule** so that it cannot develop into fruit .

Incorrectly answered feedback

Key concept: how fertilisation takes place

The **stigma** from C has been **removed** and **pollination cannot take place**, thus **no fertilisation will take place**.

OR

The **stigma** has been removed and **both pollination and fertilisation cannot take place**.

OR

The **stigma** is needed to **receive the pollen grains** so that the pollen grains **can fuse with the ovule** so that it cannot develop into fruit .

[Answers](#) | [Edit](#) | [Duplicate](#) | [Used In](#) | [Reorder](#)

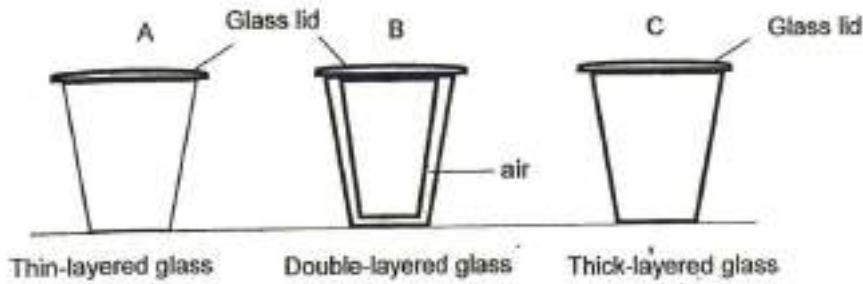
[Remove From Test](#)

Question 45

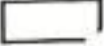


Primary 5 Science » Primary 5 Science (Term 4)

0 pts

Jimmy poured equal amounts of cold water into 3 cups, A, B and C. The cups were made of the same type of glass. He wanted to find out which cup is the best to keep the cold water cold for the longest time.



He placed the cups in the same place and observed the amount of water droplets formed on the outer surface of the cups over a period of 10 minutes. He recorded his observations as shown below.

Cup	Observations
	Some water droplets were formed.
	Very few water droplets were formed
	A lot of water droplets were formed.

Explain why water droplets appeared on the outer surface of all the cups. (2 marks)

This question is designed for extended answers that parent/ teacher will have to assign and guide child to attempt after the test has been completed.

Grading: This question type is not graded on this system and will not affect the final score as it was designed in such a way that it requires manual assistance.

Question Type: Essay
Date Added: Tue 27th Jul 2021
Last Modified: N/A
QID#: 28,532,395

Correctly answered feedback

Key Concept: Condensation of water vapour

(The cup lost heat to the cold water, making the surface cooler.)

Water vapour in the surrounding air to lost heat to the cooler outer surface of the cup and condensed to form water.

Incorrectly answered feedback

Key Concept: Condensation of water vapour

(The cup lost heat to the cold water, making the surface cooler.)

Water vapour in the surrounding air to lost heat to the cooler outer surface of the cup and condensed to form water.

[Answers](#) | [Edit](#) | [Duplicate](#) | [Used In](#) | [Reorder](#)

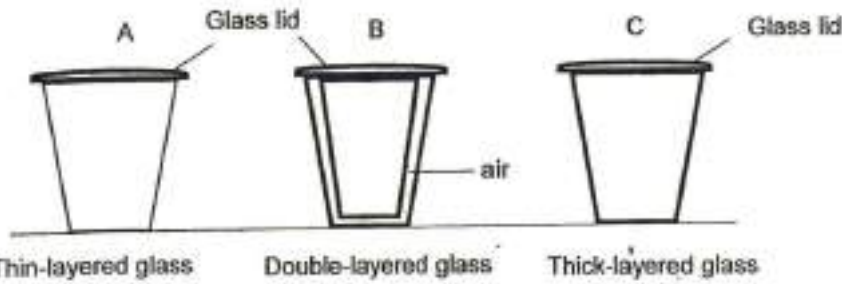
[Remove From Test](#)

Question 46

Primary 5 Science » Primary 5 Science (Term 4)

0 pts

Jimmy poured equal amounts of cold water into 3 cups, A, B and C. The cups were made of the same type of glass. He wanted to find out which cup is the best to keep the cold water cold for the longest time.



He placed the cups in the same place and observed the amount of water droplets formed on the outer surface of the cups over a period of 10 minutes. He recorded his observations as shown below.

Cup	Observations
	Some water droplets were formed.
	Very few water droplets were formed
	A lot of water droplets were formed.

The windows of most houses are made of glass.

Which glass A, B or C would be most suitable for the windows to keep a house warm during winter? Explain why. (2 marks)

This question is designed for extended answers that parent/ teacher will have to assign and guide child to attempt after the test has been completed.

Grading: This question type is not graded on this system and will not affect the final score as it was designed in such a way that it requires manual assistance.

Question Type: Essay
 Date Added: Tue 27th Jul 2021
 Last Modified: N/A
 QID#: 28,532,396

Correctly answered feedback

Key Concept: using data on condensation to infer poorest conductor of heat
 B
Air which is a poor conductor of heat is trapped between the 2 layers of glass.
 This **slows down/reduces the heat transfer from the warm house to the colder surrounding air**
 Or
slows down heat lost from the warm house to colder surrounding air.

Incorrectly answered feedback

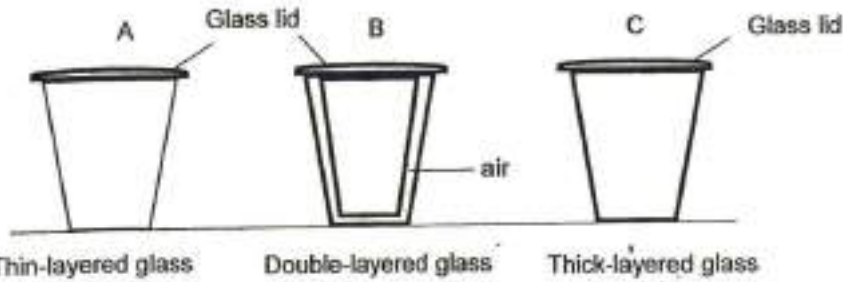
Key Concept: using data on condensation to infer poorest conductor of heat
 B
Air which is a poor conductor of heat is trapped between the 2 layers of glass.
 This **slows down/reduces the heat transfer from the warm house to the colder surrounding air**
 Or
slows down heat lost from the warm house to colder surrounding air.

Question 47

Primary 5 Science » Primary 5 Science (Term 4)

1 pt

Jimmy poured equal amounts of cold water into 3 cups, A, B and C. The cups were made of the same type of glass. He wanted to find out which cup is the best to keep the cold water cold for the longest time.



He placed the cups in the same place and observed the amount of water droplets formed on the outer surface of the cups over a period of 10 minutes. He recorded his observations as shown below.

Cup	Observations
<input type="text"/>	Some water droplets were formed.
<input type="text"/>	Very few water droplets were formed
<input type="text"/>	A lot of water droplets were formed.

Write A, B and C in the table above to match the cups with the respective observations. Match the options below:

Clue

Match

Some water droplets were formed.

C

Points: +0.3 -0

Very few water droplets were formed.

B

Points: +0.3 -0

A lot of water droplets were formed.

A

Points: +0.4 -0

Question Type: Matching
Shuffle Mode: Shuffle Matches Only
Date Added: Tue 27th Jul 2021
Last Modified: N/A
QID#: 28,532,416

[Answers](#) | [Edit](#) | [Duplicate](#) | [Used In](#) | [Reorder](#)

[Remove From Test](#)

Question 48

Primary 5 Science » Primary 5 Science (Term 4)

0 pts

Joyce was given three rods, X, Y and Z, which were made of different materials. When she touched the rods with her bare hands, X was the coldest, followed by Z and then Y.

Explain why Joyce's hand felt cold when she touched the rods. (1 mark)

This question is designed for extended answers that parent/ teacher will have to assign and guide child to attempt after the test has been completed.

Grading: This question type is not graded on this system and will not affect the final score as it was designed in such a way that it requires manual assistance.

Question Type: Essay
Date Added: Tue 27th Jul 2021
Last Modified: N/A
QID#: 28,532,397

Correctly answered feedback

Key Concept: Heat travels from hotter place to a colder place

Joyce's hand lost heat to the rods so her hand felt cold.

OR

Rod gains heat from her hand.

Incorrectly answered feedback

Key Concept: Heat travels from hotter place to a colder place

Joyce's hand lost heat tot eh rods so her hand felt cold.

OR

Rod gains heat from her hand.

[Answers](#) | [Edit](#) | [Duplicate](#) | [Used In](#) | [Reorder](#)

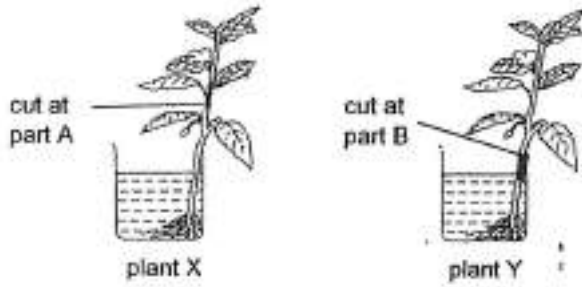
[Remove From Test](#)

Question 49

Primary 5 Science » Primary 5 Science (Term 4)

0 pts

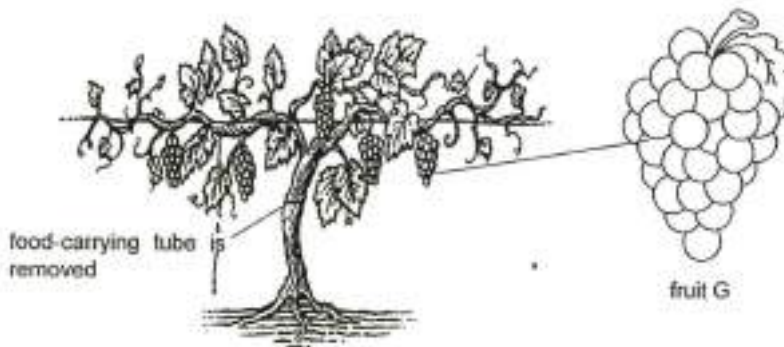
Study the diagram below. In plant X, the food carrying tube was removed from the stem at part A, while in plant Y, food carrying tube was removed at part B. The two plants were placed in beakers containing the same amount of water.



The observations of plants X and Y were recorded in the table below.

Plants	Observations made after 1 week
X	• The stem above the cut ring swells a little.
	• The roots were healthy.
Y	• The stem above the cut swells a little.
	• The roots were unhealthy.

Study the diagram below.



A farmer said that if the food-carrying tube is removed, fruit G will grow bigger. Do you agree? Explain why. [1]

This question is designed for extended answers that parent/ teacher will have to assign and guide child to attempt after the test has been completed.

Grading: This question type is not graded on this system and will not affect the final score as it was designed in such a way that it requires manual assistance.

Question Type: Essay
 Date Added: Tue 27th Jul 2021
 Last Modified: N/A
 QID#: 28,532,400

Correctly answered feedback

Concept: using concept of food carrying tubes to application question

Yes, if the food carrying tubes are removed the food made by the leaves would not be transported downward .

More food will be stored/transported to the fruits

OR

Yes, the food from the leaves will be transported to fruit G instead of the roots for a period of time.

NOT ACCEPTED:

Excess food

accumulated sugar/ extra food

All food transported to fruit

only to the fruits

Incorrectly answered feedback

Concept: using concept of food carrying tubes to application question

Yes, if the food carrying tubes are removed the food made by the leaves would not be transported downward .

More food will be stored/transported to the fruits

OR

Yes, the food from the leaves will be transported to fruit G instead of the roots for a period of time.

NOT ACCEPTED:

Excess food

accumulated sugar/ extra food

All food transported to fruit

only to the fruits

Answers | Edit | Duplicate | Used In | Reorder

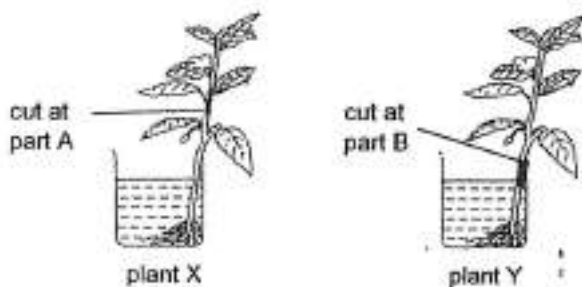
Remove From Test

Question 50

Primary 5 Science » Primary 5 Science (Term 4)

1 pt

Study the diagram below. In plant X, the food carrying tube was removed from the stem at part A, while in plant Y, food carrying tube was removed at part B. The two plants were placed in beakers containing the same amount of water.



The observations of plants X and Y were recorded in the table below.

Plants	Observations made after 1 week
X	• The stem above the cut ring swells a little.
	• The roots were healthy.
Y	• The stem above the cut swells a little.
	• The roots were unhealthy.

What is stored in the swollen part of the stem?

Accepted answers:

✓ Starch

- ✓ food
- ✓ sugar
- ✓ glucose

Question Type: Free Text
Date Added: Tue 27th Jul 2021
Last Modified: N/A
QID#: 28,532,413

Correctly answered feedback

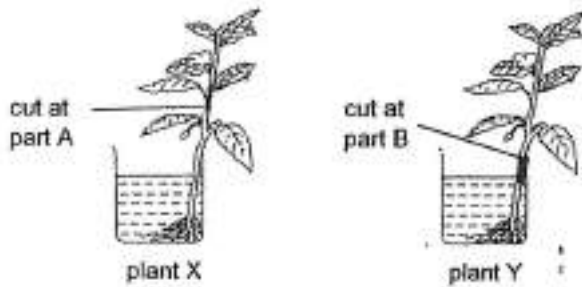
Starch
 ACCEPTED BUT NOT GOOD ANSWERS: food/sugar/glucose

[Answers](#) | [Edit](#) | [Duplicate](#) | [Used In](#) | [Reorder](#) [Remove From Test](#)

Question 51

Primary 5 Science » Primary 5 Science (Term 4) 0 pts

Study the diagram below. In plant X, the food carrying tube was removed from the stem at part A, while in plant Y, food carrying tube was removed at part B. The two plants were placed in beakers containing the same amount of water.



The observations of plants X and Y were recorded in the table below.

Plants	Observations made after 1 week
X	• The stem above the cut ring swells a little.
	• The roots were healthy.
Y	• The stem above the cut swells a little.
	• The roots were unhealthy.

Based on the observation in the table, explain why the roots of plant X remained healthy while the roots of plant Y did not. (2 marks)

This question is designed for extended answers that parent/ teacher will have to assign and guide child to attempt after the test has been completed.

Grading: This question type is not graded on this system and will not affect the final score as it was designed in such a way that it requires manual assistance.

Question Type: Essay
Date Added: Tue 27th Jul 2021
Last Modified: N/A
QID#: 28,532,398

Correctly answered feedback

Concept: explain how based on the experimental setup that relate to the function of the food carrying tubes

In plant X, there are leaves below the cut to make or provide food to the roots. While in plant Y, there are no leaves below the cut to make or provide food to the roots.

OR

In plant X, the cut was made above some leaves, the leaves still could provide food for the roots. In Plant Y, the cut was made below all the leaves, therefore the leaves could not provide food for the roots.

Without the location/WHERE - NO MARKS

Incorrectly answered feedback

Concept: explain how based on the experimental setup that relate to the function of the food carrying tubes

In plant X, there are leaves below the cut to make or provide food to the roots. While in plant Y, there are no leaves below the cut to make or provide food to the roots.

OR

In plant X, the cut was made above some leaves, the leaves still could provide food for the roots. In Plant Y, the cut was made below all the leaves, therefore the leaves could not provide food for the roots.

Without the location/WHERE - NO MARKS

[Answers](#) | [Edit](#) | [Duplicate](#) | [Used In](#) | [Reorder](#)

[Remove From Test](#)

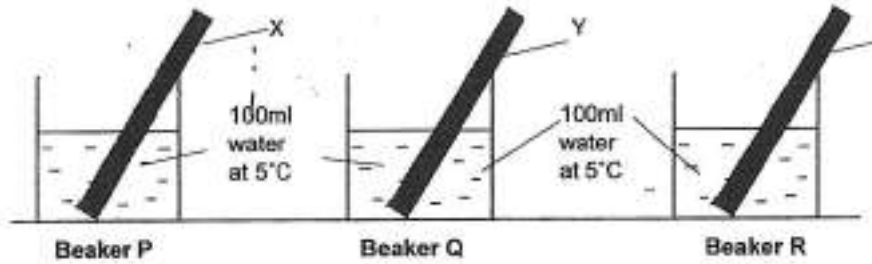
Question 52

Primary 5 Science » Primary 5 Science (Term 4)

0 pts

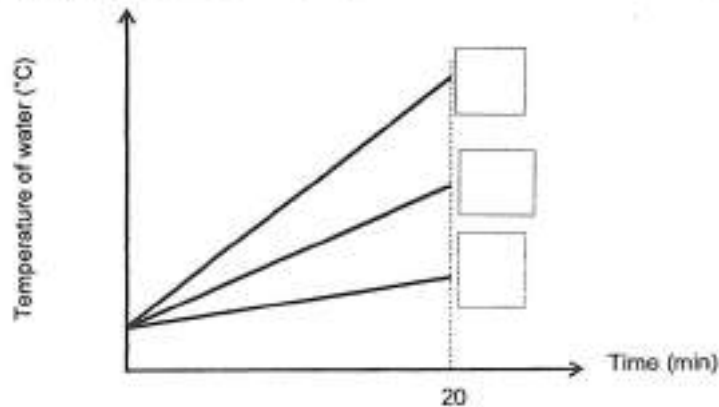
Joyce was given three rods, X, Y and Z, which were made of different materials. When she touched the rods with her bare hands, X was the coldest, followed by Z and then Y.

Joyce then heated the three rods to 85°C. Then she placed each of them into a beaker of water as shown below.



She left the beakers in her room and measured the temperature of the water in each beaker over 20 minutes. The line graphs below show the results of her experiment.

Label the line graphs below by writing P, Q and R in the correct boxes. [2]



This question is designed for extended answers that parent/ teacher will have to assign and guide child to attempt after the test has been completed.

Grading: This question type is not graded on this system and will not affect the final score as it was designed in such a way that it requires manual assistance.

Question Type: Essay
Date Added: Tue 27th Jul 2021
Last Modified: N/A
QID#: 28,532,399

Correctly answered feedback

Key concept: Better conductors of heat allow heat to flow faster from hotter place to colder place.

P
R
Q

Incorrectly answered feedback

Key concept: Better conductors of heat allow heat to flow faster from hotter place to colder place.

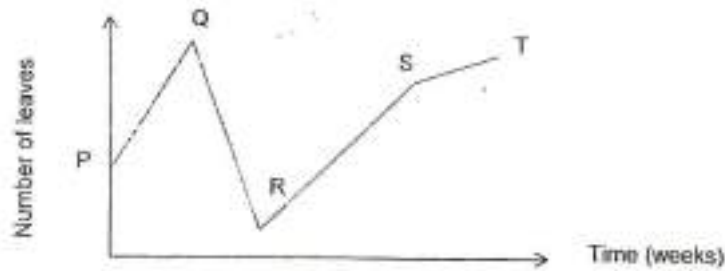
P
R
Q

Question 53

Primary 5 Science » Primary 5 Science (Term 4)

0 pts

This plant is grown in a garden where butterflies are found. The flowers from this plant are pollinated by butterflies. The graph below shows the number of leaves on this plant over a period of time.



Pesticide was sprayed to kill the caterpillars found on the plant. How would this action affect the number of fruits produced? (1 mark)

This question is designed for extended answers that parent/ teacher will have to assign and guide child to attempt after the test has been completed.

Grading: This question type is not graded on this system and will not affect the final score as it was designed in such a way that it requires manual assistance.

Question Type: Essay
Date Added: Tue 27th Jul 2021
Last Modified: N/A
QID#: 28,532,401

Correctly answered feedback**Key Concept: Role of agents of pollination in reproduction**

There will be fewer butterflies available. Fewer flowers will be pollinated and thus rate of fertilisation will decrease, so fewer fruits will be developed / formed and rate of reproduction decreases.

Incorrectly answered feedback**Key Concept: Role of agents of pollination in reproduction**

There will be fewer butterflies available. Fewer flowers will be pollinated and thus rate of fertilisation will decrease, so fewer fruits will be developed / formed and rate of reproduction decreases.

[Answers](#) | [Edit](#) | [Duplicate](#) | [Used In](#) | [Reorder](#)

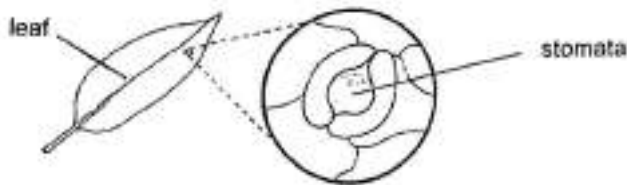
[Remove From Test](#)

Question 54

Primary 5 Science » Primary 5 Science (Term 4)

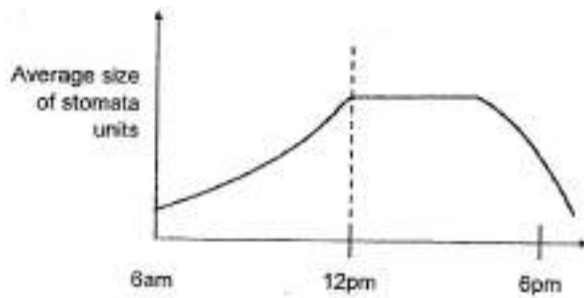
0 pts

Leaves have tiny openings called stomata on their surfaces.



Some of the gases that move through the stomata are oxygen, carbon dioxide and water vapour.

Ray measured the changes in the size of the stomata of a plant placed by the window at different times of a clear sunny day. He plotted the results as shown below.



Based on his results, what effect did light have on the size of the stomata from 6 am to 12 pm? (1 mark)

This question is designed for extended answers that parent/ teacher will have to assign and guide child to attempt after the test has been completed.

Grading: This question type is not graded on this system and will not affect the final score as it was designed in such a way that it requires manual assistance.

Question Type: Essay
Date Added: Tue 27th Jul 2021
Last Modified: N/A
QID#: 28,532,403

Correctly answered feedback

Concept: Process skill – data interpretation (graph)

The greater the amount of light, the greater the stomata size.

or

The stomata increased in size / became bigger.

NOT ACCEPTED: As the amount of light decreases, the stomata decreased in size (6am to 12pm shows increase in light intensity)

Incorrectly answered feedback

Concept: Process skill – data interpretation (graph)

The greater the amount of light, the greater the stomata size.

or

The stomata increased in size / became bigger.

NOT ACCEPTED: As the amount of light decreases, the stomata decreased in size (6am to 12pm shows increase in light intensity)

[Answers](#) | [Edit](#) | [Duplicate](#) | [Used In](#) | [Reorder](#)

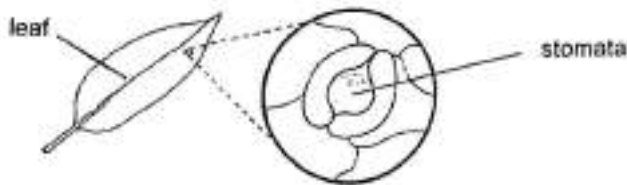
[Remove From Test](#)

Question 55

Primary 5 Science » Primary 5 Science (Term 4)

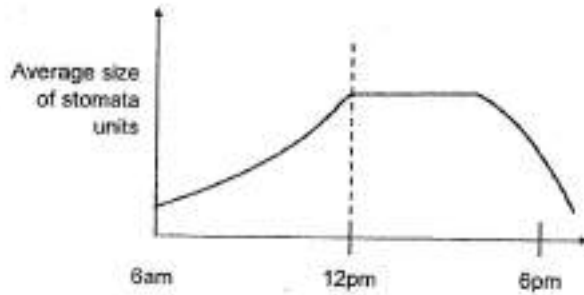
0 pts

Leaves have tiny openings called stomata on their surfaces.



Some of the gases that move through the stomata are oxygen, carbon dioxide and water vapour.

Ray measured the changes in the size of the stomata of a plant placed by the window at different times of a clear sunny day. He plotted the results as shown below.



How does the change in the size of the stomata in (a) help in photosynthesis? (1 mark)

This question is designed for extended answers that parent/ teacher will have to assign and guide child to attempt after the test has been completed.

Grading: This question type is not graded on this system and will not affect the final score as it was designed in such a way that it requires manual assistance.

Question Type: Essay
 Date Added: Tue 27th Jul 2021
 Last Modified: N/A
 QID#: 28,532,404

Correctly answered feedback

Concept: stating relationship between change variable and measured variable

With a bigger opening, **more carbon dioxide** can be absorbed into the leaf. OR
 With a bigger opening, **more carbon dioxide** can be diffused at a faster rate / at a higher rate into the leaf.

+

Thus, the rate of **photosynthesis increases** / **more food is made**.

Incorrectly answered feedback

Concept: stating relationship between change variable and measured variable

With a bigger opening, **more carbon dioxide** can be absorbed into the leaf. OR
 With a bigger opening, **more carbon dioxide** can be diffused at a faster rate / at a higher rate into the leaf.

+

Thus, the rate of **photosynthesis increases** / **more food is made**.

[Answers](#) | [Edit](#) | [Duplicate](#) | [Used In](#) | [Reorder](#)

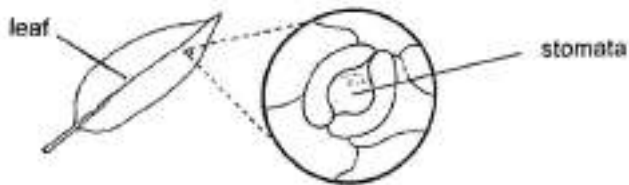
[Remove From Test](#)

Question 56

Primary 5 Science » Primary 5 Science (Term 4)

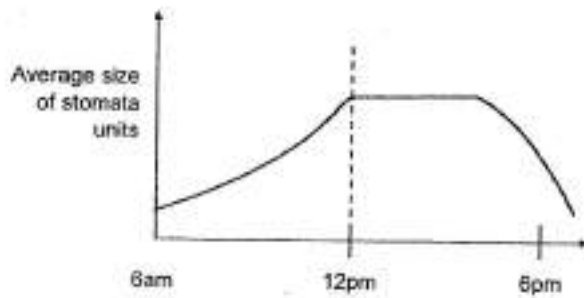
0 pts

Leaves have tiny openings called stomata on their surfaces.



Some of the gases that move through the stomata are oxygen, carbon dioxide and water vapour.

Ray measured the changes in the size of the stomata of a plant placed by the window at different times of a clear sunny day. He plotted the results as shown below.



The change in size of the stomata in the presence of light can also be a disadvantage to the plant. What is this disadvantage? (1 mark)

This question is designed for extended answers that parent/ teacher will have to assign and guide child to attempt after the test has been completed.

Grading: This question type is not graded on this system and will not affect the final score as it was designed in such a way that it requires manual assistance.

Question Type: Essay
Date Added: Tue 27th Jul 2021
Last Modified: N/A
QID#: 28,532,405

Correctly answered feedback

Concept: Explain with reasoning

Plant will lose too much water / water vapour.

Incorrectly answered feedback

Concept: Explain with reasoning

Plant will lose too much water / water vapour.

[Answers](#) | [Edit](#) | [Duplicate](#) | [Used In](#) | [Reorder](#)

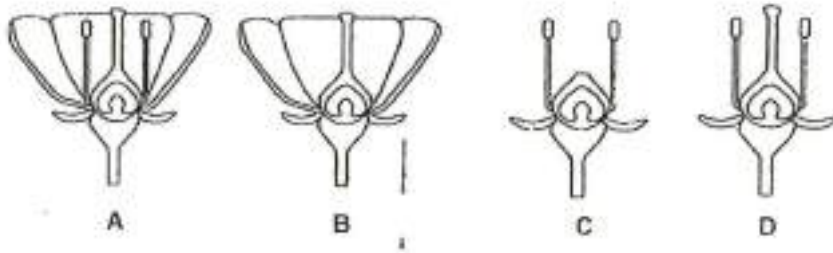
[Remove From Test](#)

Question 57

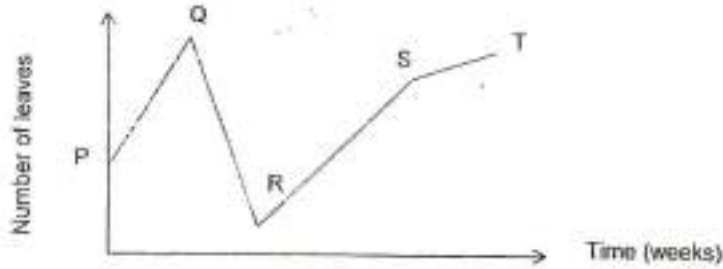
Primary 5 Science » Primary 5 Science (Term 4)

1 pt

The diagram below shows four large and brightly-coloured flowers A, B, C and D from the same type of plant. Some parts of the flower have been removed.



This plant is grown in a garden where butterflies are found. The flowers from this plant are pollinated by butterflies. The graph below shows the number of leaves on this plant over a period of time.



At which part PQ, QR, RS or ST most possibly show the butterflies in the larva stage?

Accepted answers:

- ✓ QR
- ✓ Part QR

Question Type: Free Text
 Date Added: Tue 27th Jul 2021
 Last Modified: N/A
 QID#: 28,532,412

[Answers](#) | [Edit](#) | [Duplicate](#) | [Used In](#) | [Reorder](#)

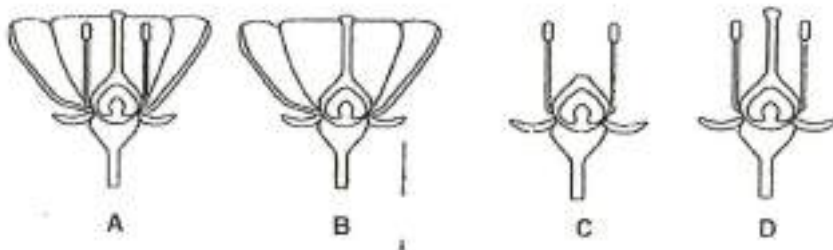
[Remove From Test](#)

Question 58

Primary 5 Science » Primary 5 Science (Term 4)

1 pt

The diagram below shows four large and brightly-coloured flowers A, B, C and D from the same type of plant. Some parts of the flower have been removed.



Which of the above flower(s) cannot develop into a fruit? (1 mark)

Accepted answers:

- ✓ Flower C
- C



Question Type: Free Text
Date Added: Tue 27th Jul 2021
Last Modified: N/A
QID#: 28,532,408

[Answers](#) | [Edit](#) | [Duplicate](#) | [Used In](#) | [Reorder](#)

[Remove From Test](#)

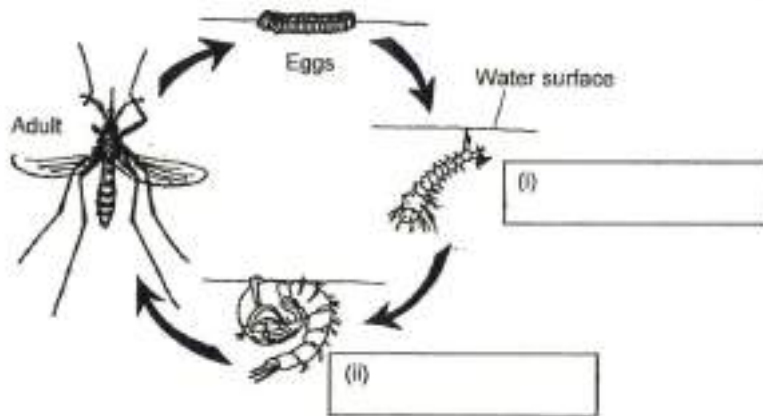
Question 59

Primary 5 Science » Primary 5 Science (Term 4)

1 pt

Dengue fever is an illness caused by infection transmitted by the *Aedes* mosquito. Mandy studied the life cycle of the *Aedes* mosquitoes at different temperatures to investigate the relationship between the temperature of surrounding air and the number of dengue cases.

Fill in the stages in the diagram above to complete the life cycle of a mosquito. [2]



The results of her study are shown below:

Duration of stages across different temperatures (number of days)					
	16 °C	22 °C	28 °C	33 °C	36°C
egg	13	8	3	3	4
larva	20	13	6	7	8
pupa	7	4	2	3	4

Fill in the stages for (i).

Accepted answers:

- ✓ Larva
- ✓ wriggler

Question Type: Free Text
Date Added: Tue 27th Jul 2021
Last Modified: N/A
QID#: 28,532,409

[Answers](#) | [Edit](#) | [Duplicate](#) | [Used In](#) | [Reorder](#)

[Remove From Test](#)

Question 60

Dengue fever is an illness caused by infection transmitted by the *Aedes* mosquito. Mandy studied the life cycle of the *Aedes* mosquitoes at different temperatures to investigate the relationship between the temperature of surrounding air and the number of dengue cases.

The results of her study are shown below:

	Duration of stages across different temperatures (number of days)				
	16 °C	22 °C	28 °C	33 °C	36 °C
egg	13	8	3	3	4
larva	20	13	6	7	6
pupa	7	4	2	3	4

Based on the results in the table above, what is the relationship between the temperature of the surroundings from 16°C to 28°C and the hatching period of the eggs of the *Aedes* mosquito? (1 mark)

This question is designed for extended answers that parent/ teacher will have to assign and guide child to attempt after the test has been completed.

Grading: This question type is not graded on this system and will not affect the final score as it was designed in such a way that it requires manual assistance.

Question Type: Essay
 Date Added: Tue 27th Jul 2021
 Last Modified: N/A
 QID#: 28,532,402

Correctly answered feedback

Key concept: interpretation of table to show relationship

As the temperature of the surroundings increases from (6°C to 28°C), the hatching period of the eggs of the *Aedes* mosquito decreases/ is shorter/ is faster

NOT ACCEPTABLE : number of eggs hatched increases.

Incorrectly answered feedback

Key concept: interpretation of table to show relationship

As the temperature of the surroundings increases from (6°C to 28°C), the hatching period of the eggs of the *Aedes* mosquito decreases/ is shorter/ is faster

NOT ACCEPTABLE : number of eggs hatched increases.

[Answers](#) | [Edit](#) | [Duplicate](#) | [Used In](#) | [Reorder](#)

[Remove From Test](#)

Question 61

Dengue fever is an illness caused by infection transmitted by the *Aedes* mosquito. Mandy studied the life cycle of the *Aedes* mosquitoes at different temperatures to investigate the relationship between the temperature of surrounding air and the number of dengue cases.

The results of her study are shown below:

	Duration of stages across different temperatures (number of days)				
	16 °C	22 °C	28 °C	33 °C	36 °C
egg	13	8	3	3	4
larva	20	13	6	7	6
pupa	7	4	2	3	4

At which temperature of surrounding air, will the cases of dengue most likely be the greatest? Explain your answer. (2 marks)

This question is designed for extended answers that parent/ teacher will have to assign and guide child to attempt after the test has been completed.

Grading: This question type is not graded on this system and will not affect the final score as it was designed in such a way that it requires manual assistance.

Question Type: Essay
 Date Added: Tue 27th Jul 2021
 Last Modified: N/A
 QID#: 28,532,406

Correctly answered feedback

Key concept: application of data to deduce how temperature affects spread of disease

At 28°C (1m)

The life cycle takes the shortest time/ least days to develop into adult.

The population of the adult mosquitoes will be most likely be the greatest and the spread/incidence of dengue fever will be the greatest.

Incorrectly answered feedback

Key concept: application of data to deduce how temperature affects spread of disease

At 28°C (1m)

The life cycle takes the shortest time/ least days to develop into adult.

The population of the adult mosquitoes will be most likely be the greatest and the spread/incidence of dengue fever will be the greatest.

[Answers](#) | [Edit](#) | [Duplicate](#) | [Used In](#) | [Reorder](#)

[Remove From Test](#)

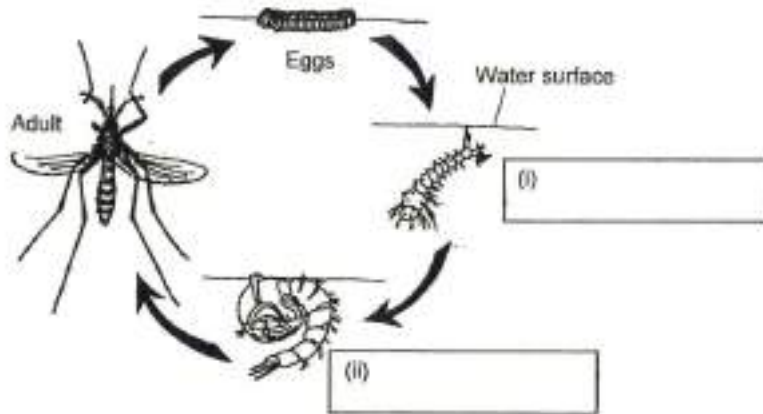
Question 62

Primary 5 Science » Primary 5 Science (Term 4)

1 pt

Dengue fever is an illness caused by infection transmitted by the *Aedes* mosquito. Mandy studied the life cycle of the *Aedes* mosquitoes at different temperatures to investigate the relationship between the temperature of surrounding air and the number of dengue cases.

Fill in the stages in the diagram above to complete the life cycle of a mosquito. [2]



The results of her study are shown below:

Duration of stages across different temperatures (number of days)					
	16 °C	22 °C	28 °C	33 °C	36°C
egg	13	8	3	3	4
larva	20	13	6	7	8
pupa	7	4	2	3	4

Fill in the stages for (ii).

Accepted answers:

✓ Pupa

Question Type: Free Text
Date Added: Tue 27th Jul 2021
Last Modified: N/A
QID#: 28,532,410

[↶ Answers](#) |
 [✎ Edit](#) |
 [📄 Duplicate](#) |
 [📌 Used In](#) |
 [⬇ Reorder](#)

[Remove From Test](#)